

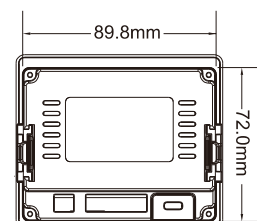
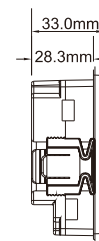
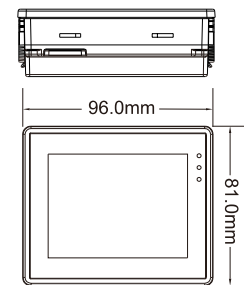
SPECIFICATIONS

Model		LEVI2035T
Main	OS	HMI Core based
	Processor	32-bits 300MHz RISC
	Size	3.5"
Display	Screen	TFT
	Resolution	320*240
	Color	260k colors
	Brightness (cd/m ²)	400
	Backlight	LED
	Backlight Lifetime	50,000 hours
Storage	Touch Panel	High precision four-wire resistive
	Memory	128 MB
	Flash	128 MB
	SD Card Slot	--
RTC	USB Port	Micro USB 2.0
	Real-time clock	Yes
I/O Port	Calendar	Yes
	COM1	CN1:RS422/RS485 CN2: RS232
	COM2	--
	COM3	--
	Ethernet	--
	CANopen	--
	Wi-Fi	--
	4G LTE	--
	Audio Output	--
	Rated Power	< 5W
Power	Power Voltage	DC 24V
	Input range	DC 12 ~ 28V
Enclosure	Shell Color	Black
	Shell Material	PC+ABS
	Overall Size (mm)	96.0W*81.0H*33.0D
	Mounting Size (mm)	91.0W* 73.0H
	Mounting Method	Panel Mount
	Weight (Kg)	0.26
Environment	Working Temperature	-10 ~ 60°C
	Storage Temperature	-20 ~ 70°C
	Humidity	10 ~ 85%RH (Non-condensing)
	Vibration Resistance	10 ~ 25 Hz (X, Y, Z direction 2G/30 minutes)
Software	Cooling	Air Cooling
	Programming	LEVIStudioU
	Data Tool	Yes
Certificates	Remote Control	--
	IP Code	IP65 (Front panel)
	CE	CE Marked
	FCC	FCC Class A
UL	--	

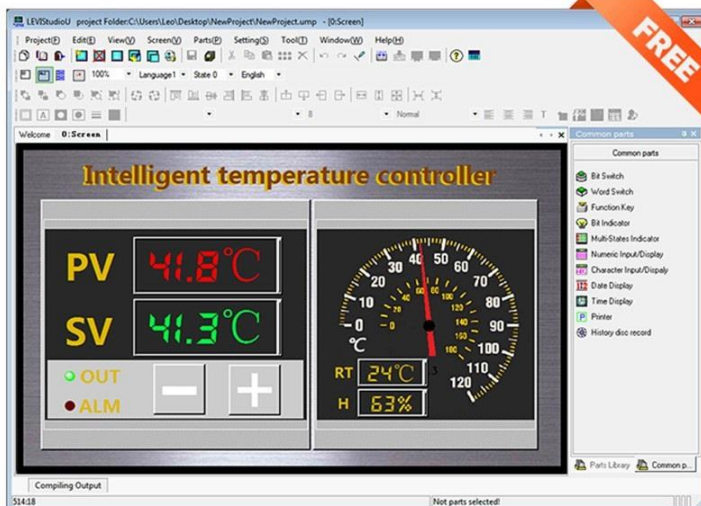
OVERVIEW



DIMENSION



SOFTWARE



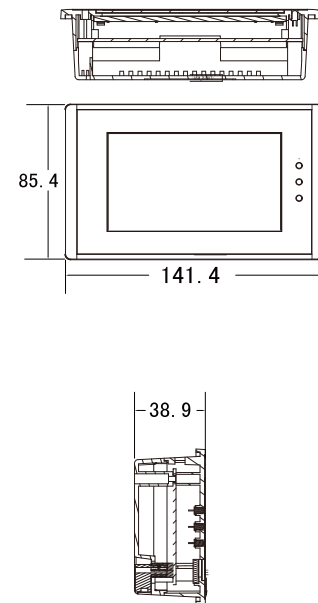
SPECIFICATIONS

	Model	LEVI2043T
Main	OS	HMI Core based
	Processor	32-bits 300MHz RISC
	Size	4.3"
Display	Screen	TFT
	Resolution	480*272
	Color	260k colors
	Brightness (cd/m ²)	400
	Backlight	LED
	Backlight Lifetime	50,000 hours
	Touch Panel	High precision four-wire resistive
Storage	Memory	128 MB
	Flash	128 MB
	SD Card Slot	--
	USB Port	Micro USB 2.0
RTC	Real-time clock	Yes
	Calendar	Yes
I/O Port	COM1	CN1:RS422/RS485 CN2: RS232
	COM2	--
	COM3	--
	Ethernet	--
	CANopen	--
	Wi-Fi	--
	4G LTE	--
	Audio Output	--
	Rated Power	< 5W
	Power Voltage	DC 24V
Power	Input range	DC 12 ~ 28V
	Shell Color	Black
	Shell Material	PC+ABS
Enclosure	Overall Size (mm)	141.4W*85.4H*38.9D
	Mounting Size (mm)	131.0W*79.0H
	Mounting Method	Panel Mount
	Weight (Kg)	0.39
	Working Temperature	-10 ~ 60°C
Environment	Storage Temperature	-20 ~ 70°C
	Humidity	10 ~ 85%RH (Non-condensing)
	Vibration Resistance	11 ~ 25 Hz (X, Y, Z direction 2G/30 minutes)
	Cooling	Air Cooling
Software	Programming	LEVIStudioU
	Data Tool	Yes
	Remote Control	--
Certificates	IP Code	IP65 (Front panel)
	CE	CE Marked
	FCC	FCC Class A
	UL	--

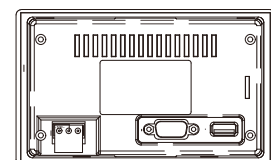
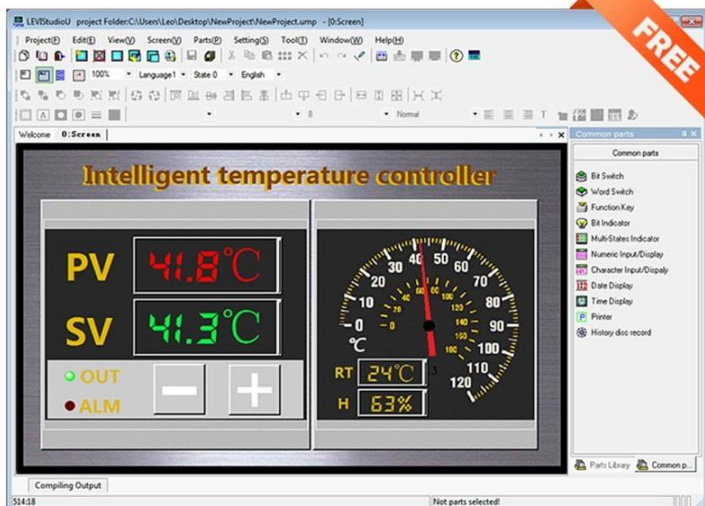
OVERVIEW



DIMENSION



SOFTWARE



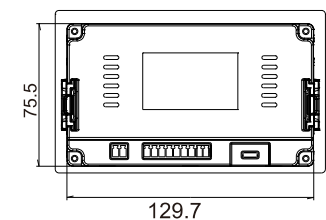
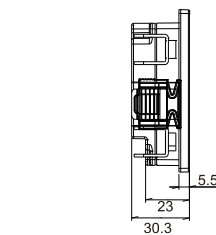
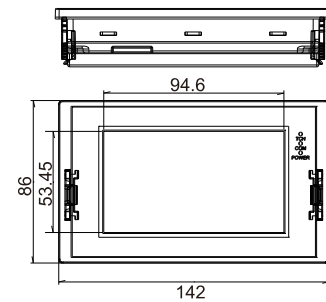
SPECIFICATIONS

Model		LEVI2043E
Main	OS	HMI Core based
	Processor	32-bits 300MHz RISC
	Size	4.3"
Display	Screen	TFT
	Resolution	480*272
	Color	260k colors
	Brightness (cd/m ²)	400
	Backlight	LED
	Backlight Lifetime	50,000 hours
	Touch Panel	High precision four-wire resistive
Storage	Memory	128 MB
	Flash	128 MB
	SD Card Slot	--
	USB Port	USB 2.0
RTC	Real-time clock	Yes
	Calendar	Yes
I/O Port	COM1	CN1:RS422/RS485 CN2: RS232
	COM2	--
	COM3	--
	Ethernet	--
	CANopen	--
	Wi-Fi	--
	4G LTE	--
	Audio Output	--
	Rated Power	< 5W
	Power Voltage	DC 24V
Power	Input range	DC 12 ~ 28V
	Shell Color	Black
	Shell Material	PC+ABS
Enclosure	Overall Size (mm)	141.0W*86.0H*30.3D
	Mounting Size (mm)	131.0W* 78.0H
	Mounting Method	Panel Mount
	Weight (Kg)	0.3
	Working Temperature	-10 ~ 60°C
Environment	Storage Temperature	-20 ~ 70°C
	Humidity	10 ~ 85%RH (Non-condensing)
	Vibration Resistance	12 ~ 25 Hz (X, Y, Z direction 2G/30 minutes)
	Cooling	Air Cooling
Software	Programming	LEVIStudioU
	Data Tool	Yes
	Remote Control	--
Certificates	IP Code	IP65 (Front panel)
	CE	CE Marked
	FCC	FCC Class A
	UL	--

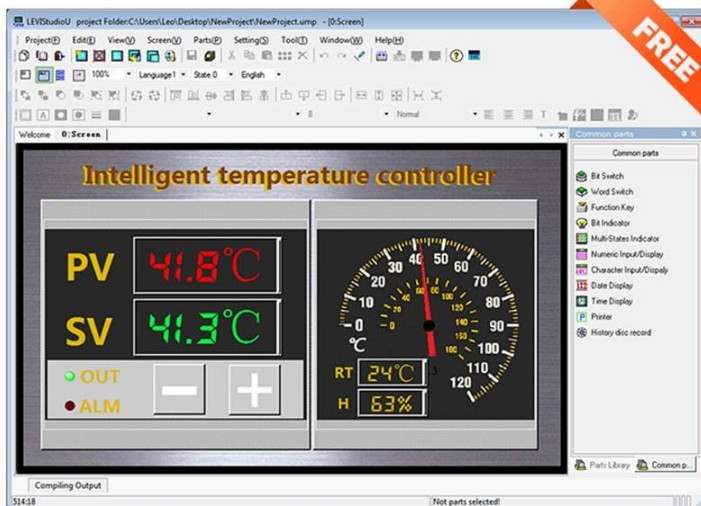
OVERVIEW



DIMENSION



SOFTWARE



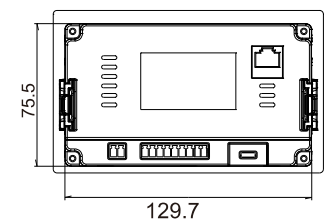
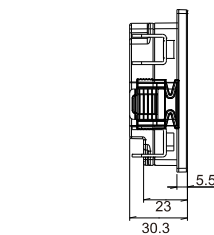
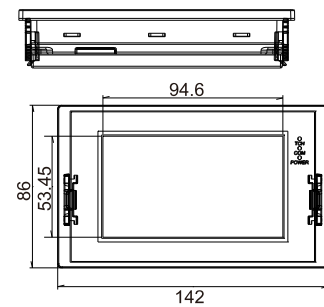
SPECIFICATIONS

Model		LEVI2043E-N
Main	OS	HMI Core based
	Processor	32-bits 300MHz RISC
	Size	4.3"
Display	Screen	TFT
	Resolution	480*272
	Color	260k colors
	Brightness (cd/m ²)	400
	Backlight	LED
	Backlight Lifetime	50,000 hours
	Touch Panel	High precision four-wire resistive
Storage	Memory	128 MB
	Flash	128 MB
	SD Card Slot	--
	USB Port	USB 2.0
RTC	Real-time clock	Yes
	Calendar	Yes
I/O Port	COM1	CN1:RS422/RS485 CN2: RS232
	COM2	--
	COM3	--
	Ethernet	x1
	CANopen	--
	Wi-Fi	--
	4G LTE	--
	Audio Output	--
	Rated Power	< 5W
	Power Voltage	DC 24V
Power	Input range	DC 12 ~ 28V
	Shell Color	Black
	Shell Material	PC+ABS
Enclosure	Overall Size (mm)	141.0W*86.0H*30.3D
	Mounting Size (mm)	131.0W* 78.0H
	Mounting Method	Panel Mount
	Weight (Kg)	0.3
	Working Temperature	-10 ~ 60°C
Environment	Storage Temperature	-20 ~ 70°C
	Humidity	10 ~ 85%RH (Non-condensing)
	Vibration Resistance	12 ~ 25 Hz (X, Y, Z direction 2G/30 minutes)
	Cooling	Air Cooling
Software	Programming	LEVISTUDIO
	Data Tool	Yes
	Remote Control	--
Certificates	IP Code	IP65 (Front panel)
	CE	CE Marked
	FCC	FCC Class A
	UL	--

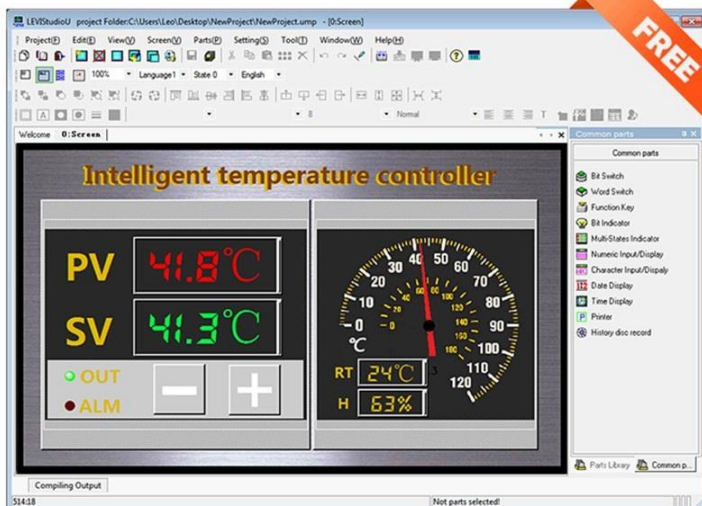
OVERVIEW



DIMENSION



SOFTWARE



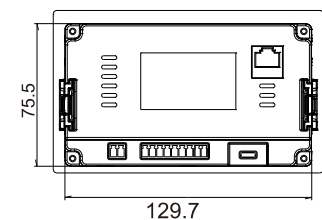
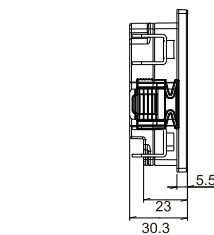
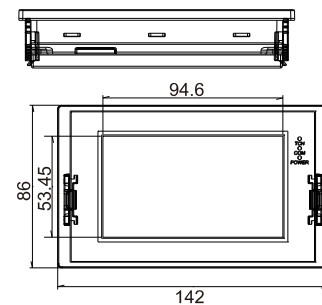
SPECIFICATIONS

Model		LEVI2043E-U
Main	OS	HMI Core based
	Processor	32-bits 300MHz RISC
	Size	4.3"
Display	Screen	TFT
	Resolution	480*272
	Color	260k colors
	Brightness (cd/m ²)	400
	Backlight	LED
	Backlight Lifetime	50,000 hours
	Touch Panel	High precision four-wire resistive
Storage	Memory	128 MB
	Flash	128 MB
	SD Card Slot	--
	USB Port	USB 2.0
RTC	Real-time clock	Yes
	Calendar	Yes
I/O Port	COM1	CN1:RS422/RS485 CN2: RS232
	COM2	--
	COM3	--
	Ethernet	x1
	CANopen	--
	Wi-Fi	--
	4G LTE	--
	Audio Output	--
	Rated Power	< 5W
	Power Voltage	DC 24V
Power	Input range	DC 12 ~ 28V
	Shell Color	Black
	Shell Material	PC+ABS
Enclosure	Overall Size (mm)	141.0W*86.0H*30.3D
	Mounting Size (mm)	131.0W* 78.0H
	Mounting Method	Panel Mount
	Weight (Kg)	0.3
	Working Temperature	-10 ~ 60°C
Environment	Storage Temperature	-20 ~ 70°C
	Humidity	10 ~ 85%RH (Non-condensing)
	Vibration Resistance	12 ~ 25 Hz (X, Y, Z direction 2G/30 minutes)
	Cooling	Air Cooling
Software	Programming	LEVISTUDIO
	Data Tool	Yes
	Remote Control	--
Certificates	IP Code	IP65 (Front panel)
	CE	CE Marked
	FCC	FCC Class A
	UL	UL Listed

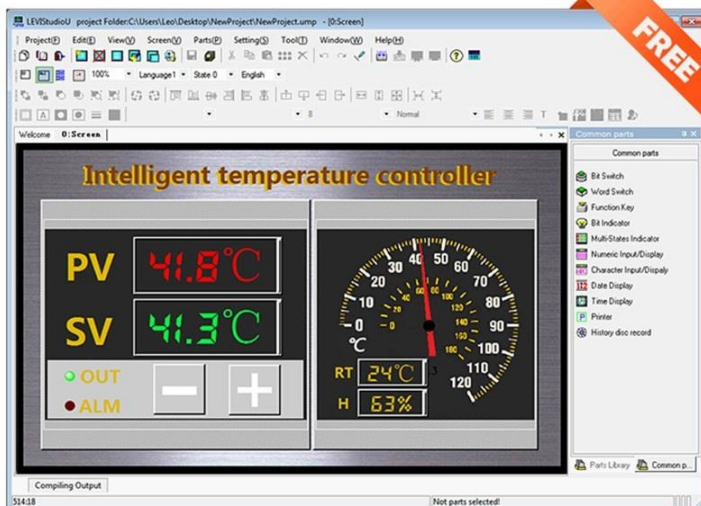
OVERVIEW



DIMENSION



SOFTWARE



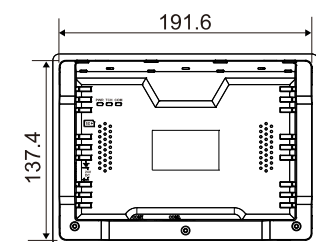
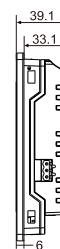
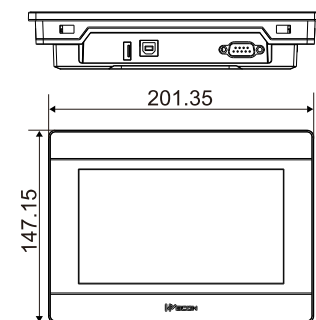
SPECIFICATIONS

Model		LEVI2070D
Main	OS	HMI Core based
	Processor	32-bits 300MHz RISC
	Size	7"
Display	Screen	TFT
	Resolution	800*480
	Color	260k colors
	Brightness (cd/m ²)	300
	Backlight	LED
	Backlight Lifetime	50,000 hours
	Touch Panel	High precision four-wire resistive
Storage	Memory	128 MB
	Flash	128 MB
	SD Card Slot	--
	USB Port	USB2.0 Host + USB2.0 Client
RTC	Real-time clock	Yes
	Calendar	Yes
I/O Port	COM1	CN1:RS422/RS485 CN2: RS232
	COM2	--
	COM3	--
	Ethernet	--
	CANopen	--
	Wi-Fi	--
	4G LTE	--
	Audio Output	--
	Rated Power	< 8W
	Power Voltage	DC 24V
Power	Input range	DC 12 ~ 28V
	Shell Color	Grey
	Shell Material	PC+ABS
Enclosure	Overall Size (mm)	201.0W*147.0H*39.0D
	Mounting Size (mm)	192.0W*138.0H
	Mounting Method	Panel Mount
	Weight (Kg)	0.74
Environment	Working Temperature	-10 ~ 60°C
	Storage Temperature	-20 ~ 70°C
	Humidity	10 ~ 85%RH (Non-condensing)
	Vibration Resistance	13 ~ 25 Hz (X, Y, Z direction 2G/30 minutes)
Software	Cooling	Air Cooling
	Programming	LEVIStudioU
	Data Tool	Yes
	Remote Control	--
Certificates	IP Code	IP65 (Front panel)
	CE	CE Marked
	FCC	FCC Class A
	UL	--

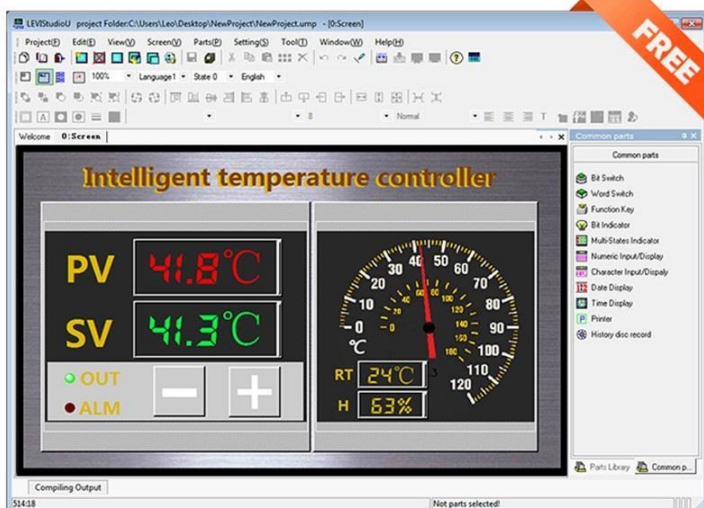
OVERVIEW



DIMENSION



SOFTWARE



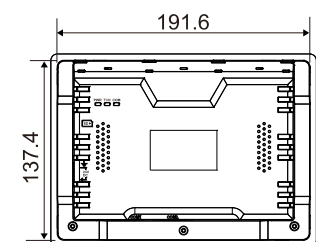
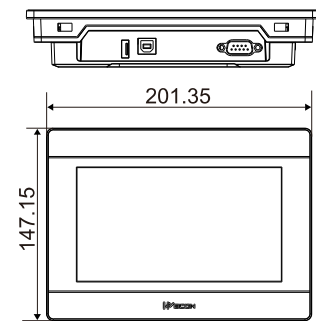
SPECIFICATIONS

Model		LEVI2070S
Main	OS	HMI Core based
	Processor	32-bits 300MHz RISC
	Size	7"
Display	Screen	TFT
	Resolution	800*480
	Color	260k colors
	Brightness (cd/m ²)	300
	Backlight	LED
	Backlight Lifetime	50,000 hours
	Touch Panel	High precision four-wire resistive
Storage	Memory	128 MB
	Flash	128 MB
	SD Card Slot	--
	USB Port	USB2.0 Host + USB2.0 Client
RTC	Real-time clock	Yes
	Calendar	Yes
I/O Port	COM1	CN1:RS485 CN2: RS485
	COM2	--
	COM3	--
	Ethernet	--
	CANopen	--
	Wi-Fi	--
	4G LTE	--
	Audio Output	--
	Rated Power	< 8W
	Power Voltage	DC 24V
Power	Input range	DC 12 ~ 28V
	Shell Color	Grey
	Shell Material	PC+ABS
Enclosure	Overall Size (mm)	201.0W*147.0H*39.0D
	Mounting Size (mm)	192.0W*138.0H
	Mounting Method	Panel Mount
	Weight (Kg)	0.74
Environment	Working Temperature	-10 ~ 60°C
	Storage Temperature	-20 ~ 70°C
	Humidity	10 ~ 85%RH (Non-condensing)
	Vibration Resistance	13 ~ 25 Hz (X, Y, Z direction 2G/30 minutes)
Software	Cooling	Air Cooling
	Programming	LEVIStudioU
	Data Tool	Yes
Certificates	Remote Control	--
	IP Code	IP65 (Front panel)
	CE	CE Marked
	FCC	FCC Class A
UL	--	

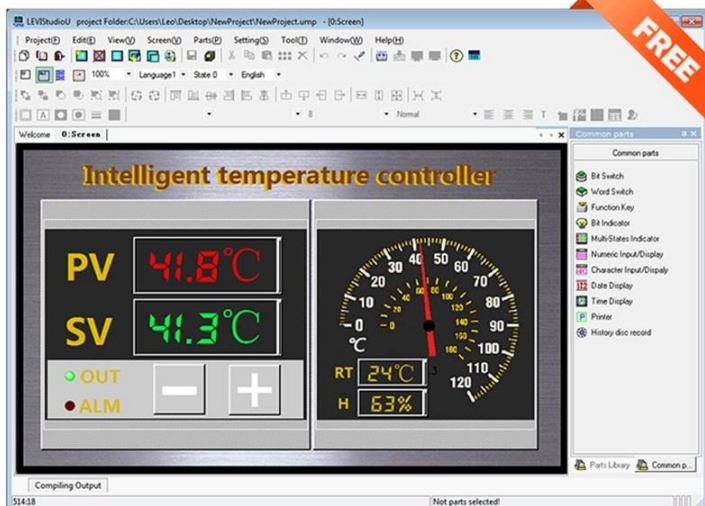
OVERVIEW



DIMENSION



SOFTWARE



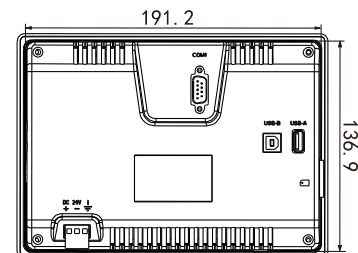
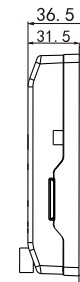
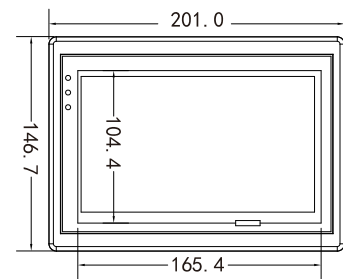
SPECIFICATIONS

Model		LEVI700ML
Main	OS	HMI Core based
	Processor	32-bits 300MHz RISC
	Size	7"
Display	Screen	TFT
	Resolution	800*480
	Color	260k colors
	Brightness (cd/m ²)	300
	Backlight	LED
	Backlight Lifetime	50,000 hours
Storage	Touch Panel	High precision four-wire resistive
	Memory	128 MB
	Flash	128 MB
	SD Card Slot	--
RTC	USB Port	USB2.0 Host + USB2.0 Client
	Real-time clock	Yes
I/O Port	Calendar	Yes
	COM1	CN1:RS422/RS485 CN2: RS232
	COM2	--
	COM3	--
	Ethernet	--
	CANopen	--
	Wi-Fi	--
	4G LTE	--
	Audio Output	--
	Rated Power	< 8W
Power	Power Voltage	DC 24V
	Input range	DC 12 ~ 28V
Enclosure	Shell Color	Black
	Shell Material	PC+ABS
	Overall Size (mm)	201.0W*146.0H*36.0D
	Mounting Size (mm)	192.0W*138.0H
	Mounting Method	Panel Mount
	Weight (Kg)	0.8
Environment	Working Temperature	-10 ~ 60°C
	Storage Temperature	-20 ~ 70°C
	Humidity	10 ~ 85%RH (Non-condensing)
	Vibration Resistance	14 ~ 25 Hz (X, Y, Z direction 2G/30 minutes)
Software	Cooling	Air Cooling
	Programming	LEVIStudioU
	Data Tool	Yes
Certificates	Remote Control	--
	IP Code	IP65 (Front panel)
	CE	CE Marked
	FCC	FCC Class A
UL	--	

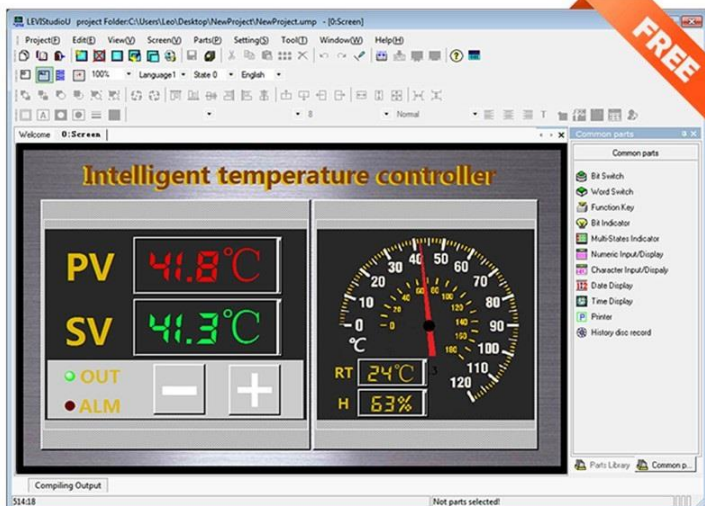
OVERVIEW



DIMENSION



SOFTWARE



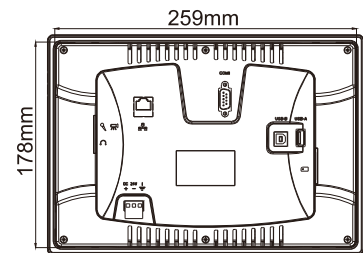
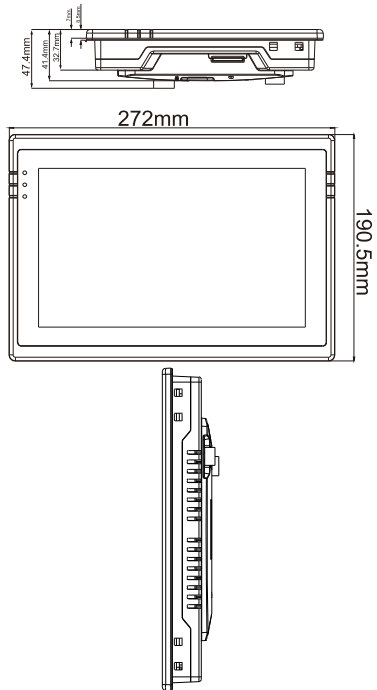
SPECIFICATIONS

	Model	LEVI102ML	
Main	OS	HMI Core based	
	Processor	32-bits 300MHz RISC	
	Size	10.2"	
Display	Screen	TFT	
	Resolution	800*480	
	Color	260k colors	
	Brightness (cd/m ²)	300	
	Backlight	LED	
	Backlight Lifetime	50,000 hours	
	Touch Panel	High precision four-wire resistive	
Storage	Memory	128 MB	
	Flash	128 MB	
	SD Card Slot	--	
	USB Port	USB2.0 Host + USB2.0 Client	
RTC	Real-time clock	Yes	
	Calendar	Yes	
I/O Port	COM1	CN1:RS422/RS485 CN2: RS232	
	COM2	--	
	COM3	--	
	Ethernet	--	
	CANopen	--	
	Wi-Fi	--	
	4G LTE	--	
	Audio Output	--	
	Power	Rated Power	< 8W
		Power Voltage	DC 24V
Input range		DC 12 ~ 28V	
Enclosure	Shell Color	Black	
	Shell Material	PC+ABS	
	Overall Size (mm)	271.8W*190.4H*41.2D	
	Mounting Size (mm)	260.0W*179.0H	
	Mounting Method	Panel Mount	
	Weight (Kg)	1.37	
Environment	Working Temperature	-10 ~ 60°C	
	Storage Temperature	-20 ~ 70°C	
	Humidity	10 ~ 85%RH (Non-condensing)	
	Vibration Resistance	15 ~ 25 Hz (X, Y, Z direction 2G/30 minutes)	
Software	Cooling	Air Cooling	
	Programming	LEVISTUDIOJ	
	Data Tool	Yes	
Certificates	Remote Control	--	
	IP Code	IP65 (Front panel)	
	CE	CE Marked	
	FCC	FCC Class A	
UL	--		

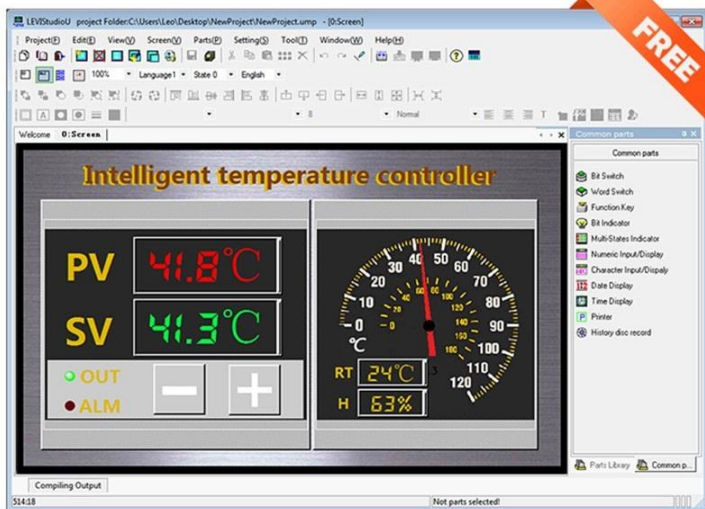
OVERVIEW



DIMENSION



SOFTWARE



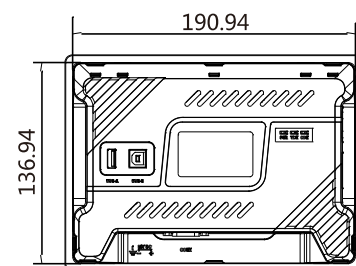
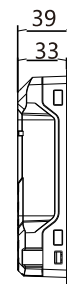
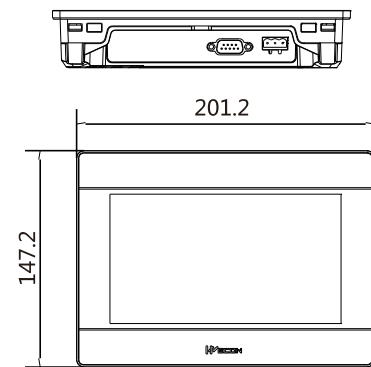
SPECIFICATIONS

Model		PI3070i	
Main	OS	Linux 4.9.11 QT based	
	Processor	Cortex A7 528MHz	
	Size	7"	
Display	Screen	TFT	
	Resolution	800*480	
	Color	16,000k colors	
	Brightness (cd/m ²)	300	
	Backlight	LED	
	Backlight Lifetime	50,000 hours	
	Touch Panel	High precision four-wire resistive	
Storage	Memory	128 MB	
	Flash	128 MB	
	SD Card Slot	--	
	USB Port	USB2.0 Host + USB2.0 Client	
RTC	Real-time clock	Yes	
	Calendar	Yes	
I/O Port	COM1	CN1:RS422/RS485 CN2: RS232	
	COM2	--	
	COM3	--	
	Ethernet	--	
	CANopen	--	
	Wi-Fi	--	
	4G LTE	--	
	Audio Output	--	
	Power	Rated Power	< 8W
		Power Voltage	DC 24V
Input range		DC 12 ~ 28V	
Enclosure	Shell Color	Grey	
	Shell Material	PC+ABS	
	Overall Size (mm)	201.2W*147.2H*39.0D	
	Mounting Size (mm)	192.0W*138.0H	
	Mounting Method	Panel Mount	
	Weight (Kg)	0.74	
Environment	Working Temperature	-10 ~ 60°C	
	Storage Temperature	-20 ~ 70°C	
	Humidity	10 ~ 85%RH (Non-condensing)	
	Vibration Resistance	16 ~ 25 Hz (X, Y, Z direction 2G/30 minutes)	
Software	Cooling	Air Cooling	
	Programming	PIStudio	
	Data Tool	Yes	
Certificates	Remote Control	--	
	IP Code	IP65 (Front panel)	
	CE	CE Marked	
	FCC	FCC Class A	
UL	--		

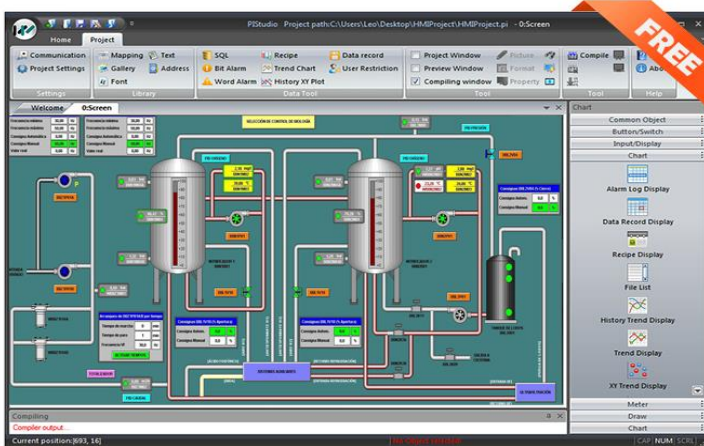
OVERVIEW



DIMENSION



SOFTWARE



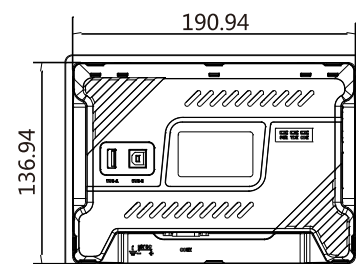
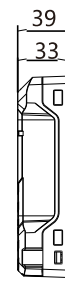
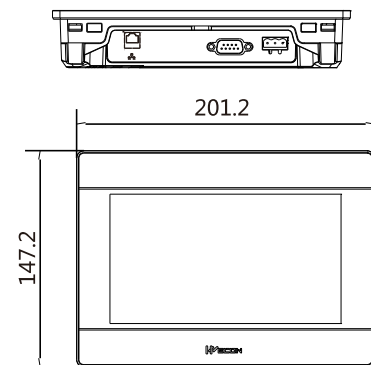
SPECIFICATIONS

Model		PI3070i-N	
Main	OS	Linux 4.9.11 QT based	
	Processor	Cortex A7 528MHz	
	Size	7"	
Display	Screen	TFT	
	Resolution	800*480	
	Color	16,000k colors	
	Brightness (cd/m ²)	300	
	Backlight	LED	
	Backlight Lifetime	50,000 hours	
	Touch Panel	High precision four-wire resistive	
Storage	Memory	128 MB	
	Flash	128 MB	
	SD Card Slot	--	
	USB Port	USB2.0 Host + USB2.0 Client	
RTC	Real-time clock	Yes	
	Calendar	Yes	
I/O Port	COM1	CN1:RS422/RS485 CN2: RS232	
	COM2	--	
	COM3	--	
	Ethernet	x1	
	CANopen	--	
	Wi-Fi	--	
	4G LTE	--	
	Audio Output	--	
	Power	Rated Power	< 8W
		Power Voltage	DC 24V
Input range		DC 12 ~ 28V	
Enclosure	Shell Color	Grey	
	Shell Material	PC+ABS	
	Overall Size (mm)	201.2W*147.2H*39.0D	
	Mounting Size (mm)	192.0W*138.0H	
	Mounting Method	Panel Mount	
	Weight (Kg)	0.74	
Environment	Working Temperature	-10 ~ 60°C	
	Storage Temperature	-20 ~ 70°C	
	Humidity	10 ~ 85%RH (Non-condensing)	
	Vibration Resistance	16 ~ 25 Hz (X, Y, Z direction 2G/30 minutes)	
Software	Cooling	Air Cooling	
	Programming	PIStudio	
	Data Tool	Yes	
	Remote Control	--	
Certificates	IP Code	IP65 (Front panel)	
	CE	CE Marked	
	FCC	FCC Class A	
	UL	--	

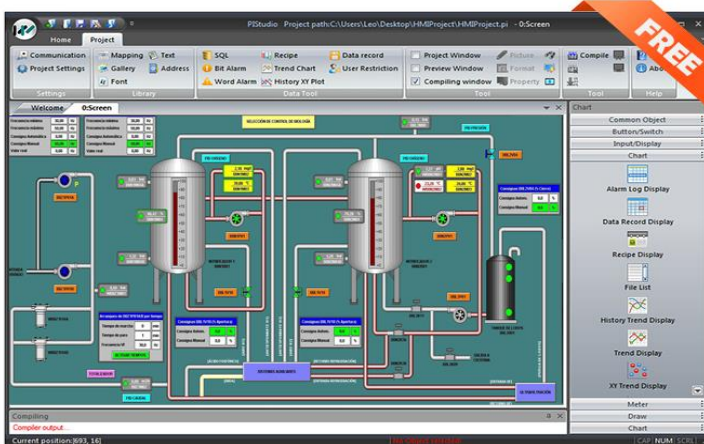
OVERVIEW



DIMENSION



SOFTWARE



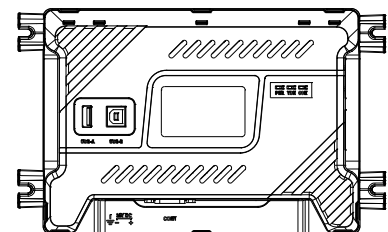
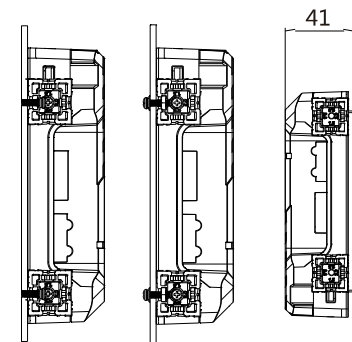
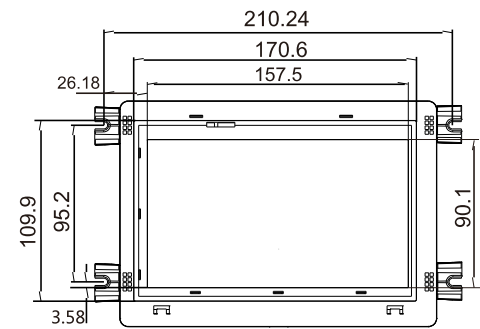
SPECIFICATIONS

Model		PI3070i-SL
Main	OS	Linux 4.9.11 QT based
	Processor	Cortex A7 528MHz
	Size	7"
Display	Screen	TFT
	Resolution	800*480
	Color	16,000k colors
	Brightness (cd/m ²)	300
	Backlight	LED
	Backlight Lifetime	50,000 hours
	Touch Panel	High precision four-wire resistive
Storage	Memory	128 MB
	Flash	128 MB
	SD Card Slot	--
RTC	USB Port	USB2.0 Host + USB2.0 Client
	Real-time clock	Yes
I/O Port	Calendar	Yes
	COM1	CN1:RS422/RS485 CN2: RS232
	COM2	--
	COM3	--
	Ethernet	--
	CANopen	--
	Wi-Fi	--
	4G LTE	--
	Audio Output	--
	Rated Power	< 8W
Power	Power Voltage	DC 24V
	Input range	DC 12 ~ 28V
Enclosure	Shell Color	Grey
	Shell Material	PC+ABS
	Overall Size (mm)	191.2W*137.2H*41.0D
	Mounting Size (mm)	172.0W*111.00H
	Mounting Method	Panel Mount (Open frame)
	Weight (Kg)	0.74
Environment	Working Temperature	-10 ~ 60°C
	Storage Temperature	-20 ~ 70°C
	Humidity	10 ~ 85%RH (Non-condensing)
	Vibration Resistance	18 ~ 25 Hz (X, Y, Z direction 2G/30 minutes)
Software	Cooling	Air Cooling
	Programming	PIStudio
	Data Tool	Yes
Certificates	Remote Control	--
	IP Code	IP65 (Front panel)
	CE	CE Marked
	FCC	FCC Class A
UL	--	

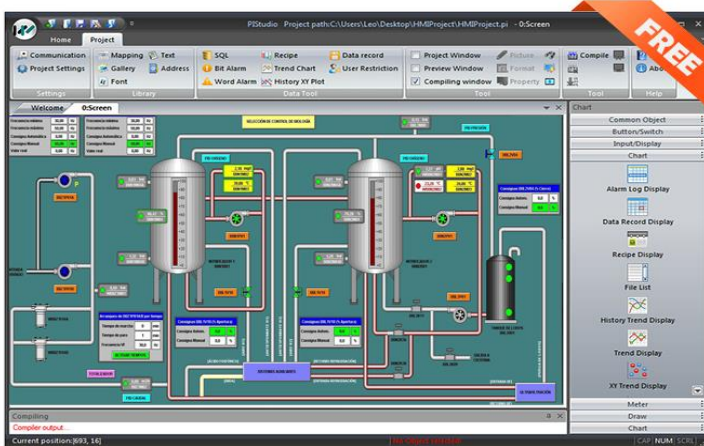
OVERVIEW



DIMENSION



SOFTWARE



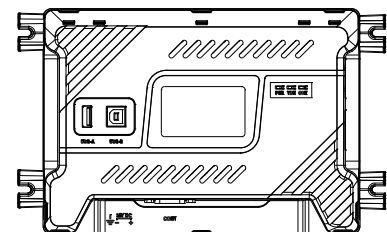
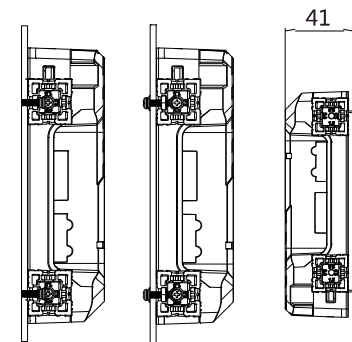
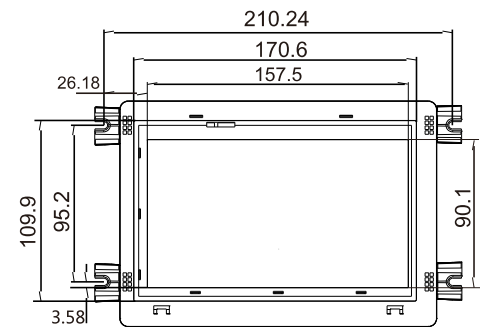
SPECIFICATIONS

	Model	PI3070i-N-SL
Main	OS	Linux 4.9.11 QT based
	Processor	Cortex A7 528MHz
	Size	7"
Display	Screen	TFT
	Resolution	800*480
	Color	16,000k colors
	Brightness (cd/m ²)	300
	Backlight	LED
	Backlight Lifetime	50,000 hours
	Touch Panel	High precision four-wire resistive
Storage	Memory	128 MB
	Flash	128 MB
	SD Card Slot	--
RTC	USB Port	USB2.0 Host + USB2.0 Client
	Real-time clock	Yes
I/O Port	Calendar	Yes
	COM1	CN1:RS422/RS485 CN2: RS232
	COM2	--
	COM3	--
	Ethernet	x1
	CANopen	--
	Wi-Fi	--
	4G LTE	--
	Audio Output	--
	Power	Rated Power
Enclosure	Power Voltage	DC 24V
	Input range	DC 12 ~ 28V
	Shell Color	Grey
	Shell Material	PC+ABS
	Overall Size (mm)	191.2W*137.2H*41.0D
Environment	Mounting Size (mm)	172.0W*111.00H
	Mounting Method	Panel Mount (Open frame)
	Weight (Kg)	0.74
	Working Temperature	-10 ~ 60°C
	Storage Temperature	-20 ~ 70°C
Software	Humidity	10 ~ 85%RH (Non-condensing)
	Vibration Resistance	18 ~ 25 Hz (X, Y, Z direction 2G/30 minutes)
	Cooling	Air Cooling
Certificates	Programming	PIStudio
	Data Tool	Yes
Certificates	Remote Control	--
	IP Code	IP65 (Front panel)
	CE	CE Marked
	FCC	FCC Class A
	UL	--

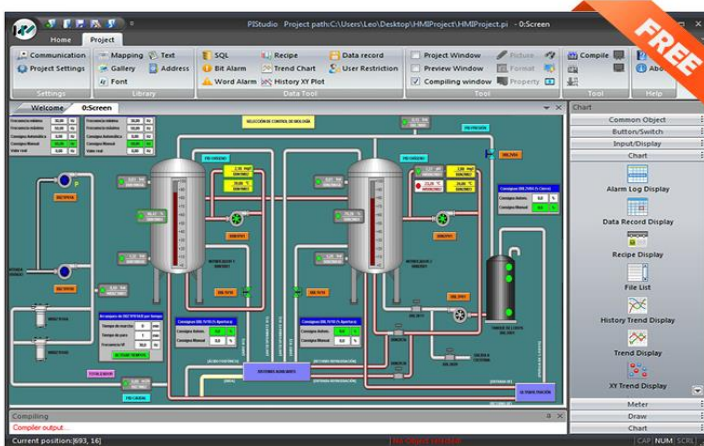
OVERVIEW



DIMENSION



SOFTWARE



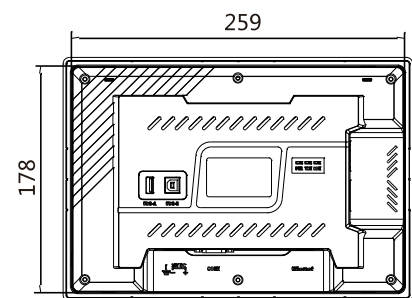
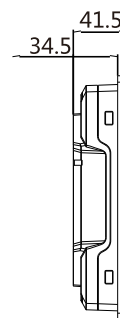
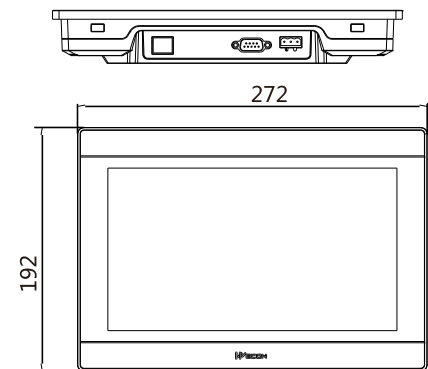
SPECIFICATIONS

Model		PI3102i	
Main	OS	Linux 4.9.11 QT based	
	Processor	Cortex A7 528MHz	
	Size	10.2"	
Display	Screen	TFT	
	Resolution	1024*600	
	Color	16,000k colors	
	Brightness (cd/m ²)	300	
	Backlight	LED	
	Backlight Lifetime	50,000 hours	
	Touch Panel	High precision four-wire resistive	
Storage	Memory	128 MB	
	Flash	128 MB	
	SD Card Slot	--	
	USB Port	USB2.0 Host + USB2.0 Client	
RTC	Real-time clock	Yes	
	Calendar	Yes	
I/O Port	COM1	CN1:RS422/RS485 CN2: RS232	
	COM2	--	
	COM3	--	
	Ethernet	x1	
	CANopen	--	
	Wi-Fi	--	
	4G LTE	--	
	Audio Output	--	
	Power	Rated Power	< 10W
		Power Voltage	DC 24V
Input range		DC 12 ~ 28V	
Enclosure	Shell Color	Grey	
	Shell Material	PC+ABS	
	Overall Size (mm)	272.0W*190.0H*41.5D	
	Mounting Size (mm)	260.0W*179.0H	
	Mounting Method	Panel Mount	
Environment	Weight (Kg)	1.31	
	Working Temperature	-10 ~ 60°C	
	Storage Temperature	-20 ~ 70°C	
	Humidity	10 ~ 85%RH (Non-condensing)	
	Vibration Resistance	17 ~ 25 Hz (X, Y, Z direction 2G/30 minutes)	
Software	Cooling	Air Cooling	
	Programming	PIStudio	
	Data Tool	Yes	
Certificates	Remote Control	--	
	IP Code	IP65 (Front panel)	
	CE	CE Marked	
	FCC	FCC Class A	
UL	--		

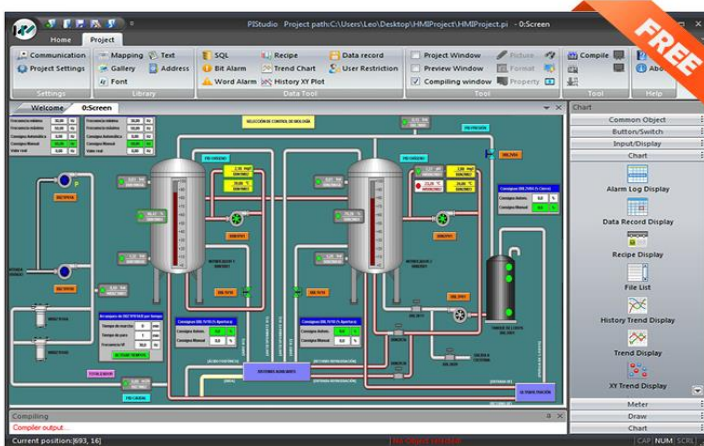
OVERVIEW



DIMENSION



SOFTWARE



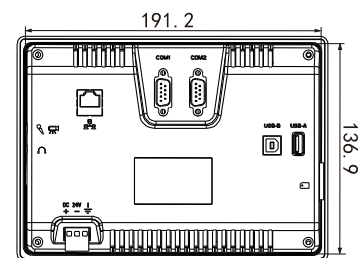
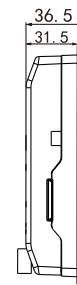
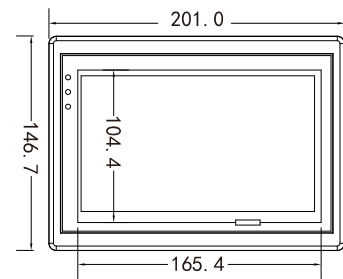
SPECIFICATIONS

Model		PI3070N
Main	OS	Linux 3.2.0 QT based
	Processor	Cortex A8 600MHz
	Size	7"
Display	Screen	TFT
	Resolution	800*480
	Color	16,000k colors
	Brightness (cd/m ²)	300
	Backlight	LED
	Backlight Lifetime	50,000 hours
	Touch Panel	High precision four-wire resistive
Storage	Memory	128 MB
	Flash	128 MB
	SD Card Slot	Yes
	USB Port	USB2.0 Host + USB2.0 Client
RTC	Real-time clock	Yes
	Calendar	Yes
	COM1	RS232/RS422/RS485
I/O Port	COM2	RS232/RS485
	COM3	--
	Ethernet	x1
	CANopen	--
	Wi-Fi	--
	4G LTE	--
	Audio Output	--
	Rated Power	< 10W
Power	Power Voltage	DC 24V
	Input range	DC 12 ~ 28V
	Shell Color	Grey
Enclosure	Shell Material	PC+ABS
	Overall Size (mm)	200.1W*146.0H*36.5D
	Mounting Size (mm)	192.0W*138.0H
	Mounting Method	Panel Mount
	Weight (Kg)	0.6
Environment	Working Temperature	-10 ~ 60°C
	Storage Temperature	-20 ~ 70°C
	Humidity	10 ~ 90%RH (Non-condensing)
	Vibration Resistance	19 ~ 25 Hz (X, Y, Z direction 2G/30 minutes)
Software	Cooling	Air Cooling
	Programming	PIStudio
	Data Tool	Yes
	Remote Control	--
Certificates	IP Code	IP65 (Front panel)
	CE	CE Marked
	FCC	FCC Class A
	UL	--

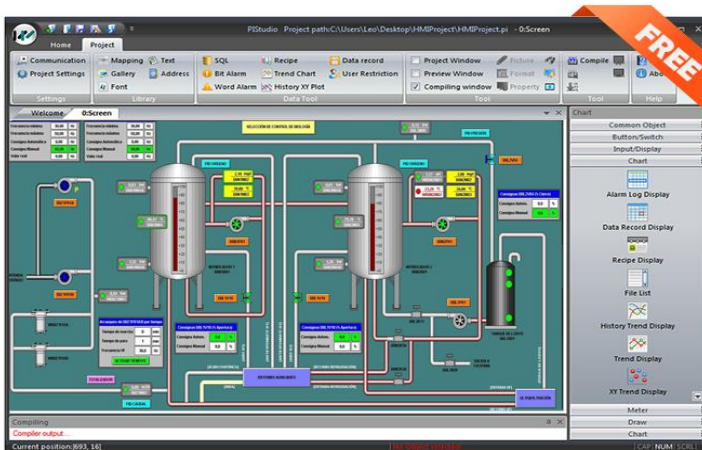
OVERVIEW



DIMENSION



SOFTWARE



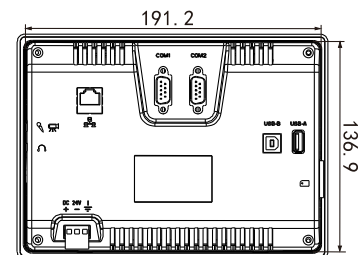
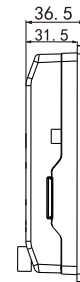
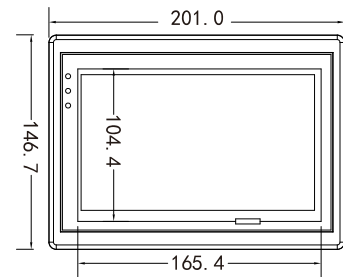
SPECIFICATIONS

Model		PI3070N-2S
Main	OS	Linux 3.2.0 QT based
	Processor	Cortex A8 600MHz
	Size	7"
	Screen	TFT
Display	Resolution	800*480
	Color	16,000k colors
	Brightness (cd/m ²)	300
	Backlight	LED
	Backlight Lifetime	50,000 hours
	Touch Panel	High precision four-wire resistive
	Memory	128 MB
Storage	Flash	128 MB
	SD Card Slot	Yes
	USB Port	USB2.0 Host + USB2.0 Client
RTC	Real-time clock	Yes
	Calendar	Yes
I/O Port	COM1	CN1:RS422/RS485 CN2: RS232
	COM2	CN1:RS485 CN2: RS232
	COM3	--
	Ethernet	x1
	CANopen	--
	Wi-Fi	--
	4G LTE	--
	Audio Output	--
	Rated Power	< 10W
Power	Power Voltage	DC 24V
	Input range	DC 12 ~ 28V
	Shell Color	Grey
Enclosure	Shell Material	PC+ABS
	Overall Size (mm)	200.1W*146.0H*36.5D
	Mounting Size (mm)	192.0W*138.0H
	Mounting Method	Panel Mount
	Weight (Kg)	0.6
	Working Temperature	-10 ~ 60°C
Environment	Storage Temperature	-20 ~ 70°C
	Humidity	10 ~ 90%RH (Non-condensing)
	Vibration Resistance	19 ~ 25 Hz (X, Y, Z direction 2G/30 minutes)
	Cooling	Air Cooling
Software	Programming	PIStudio
	Data Tool	Yes
	Remote Control	--
Certificates	IP Code	IP65 (Front panel)
	CE	CE Marked
	FCC	FCC Class A
	UL	--

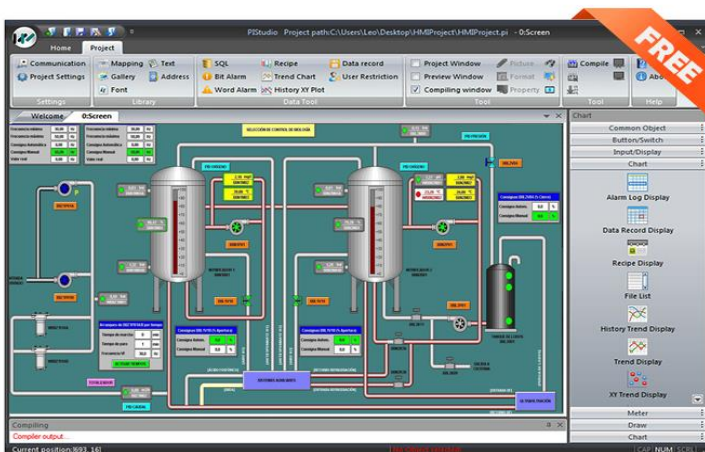
OVERVIEW



DIMENSION



SOFTWARE



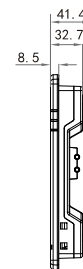
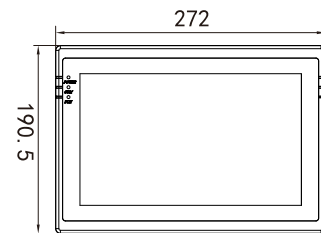
SPECIFICATIONS

Model		PI3102N
Main	OS	Linux 3.2.0 QT based
	Processor	Cortex A8 600MHz
	Size	10.2"
Display	Screen	TFT
	Resolution	800*480
	Color	16,000k colors
	Brightness (cd/m ²)	350
	Backlight	LED
	Backlight Lifetime	50,000 hours
Storage	Touch Panel	High precision four-wire resistive
	Memory	128 MB
	Flash	128 MB
	SD Card Slot	Yes
RTC	USB Port	USB2.0 Host + USB2.0 Client
	Real-time clock	Yes
I/O Port	Calendar	Yes
	COM1	RS232/RS422/RS485
	COM2	RS232/RS485
	COM3	--
	Ethernet	x1
Power	CANopen	--
	Wi-Fi	--
	4G LTE	--
	Audio Output	--
Enclosure	Rated Power	< 10W
	Power Voltage	DC 24V
	Input range	DC 12 ~ 28V
Environment	Shell Color	Grey
	Shell Material	PC+ABS
	Overall Size (mm)	271.8W*190.4H*41.2D
	Mounting Size (mm)	260.0W*179.0H
	Mounting Method	Panel Mount
	Weight (Kg)	1.2
Software	Working Temperature	-10 ~ 60°C
	Storage Temperature	-20 ~ 70°C
	Humidity	10 ~ 90%RH (Non-condensing)
	Vibration Resistance	20 ~ 25 Hz (X, Y, Z direction 2G/30 minutes)
Certificates	Cooling	Air Cooling
	Programming	PIStudio
	Data Tool	Yes
Certificates	Remote Control	--
	IP Code	IP65 (Front panel)
	CE	CE Marked
	FCC	FCC Class A
UL	--	

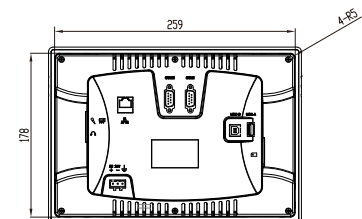
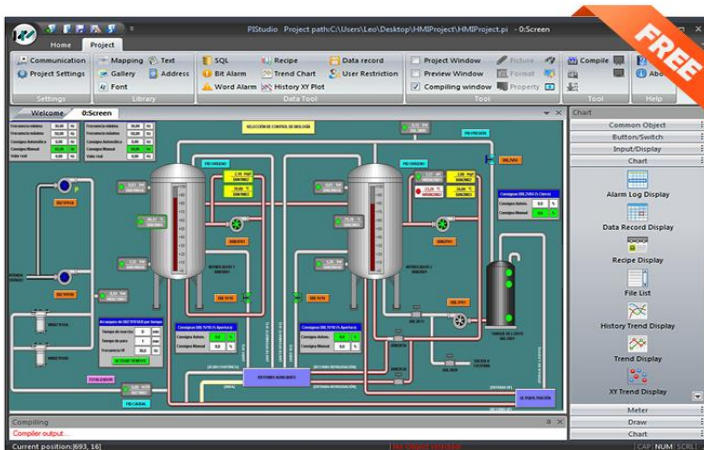
OVERVIEW



DIMENSION



SOFTWARE



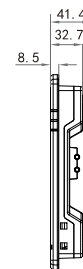
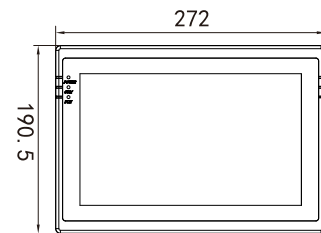
SPECIFICATIONS

Model		PI3102H
Main	OS	Linux 3.2.0 QT based
	Processor	Cortex A8 600MHz
	Size	10.2"
Display	Screen	TFT
	Resolution	1024*600
	Color	16,000k colors
	Brightness (cd/m ²)	350
	Backlight	LED
	Backlight Lifetime	50,000 hours
Storage	Touch Panel	High precision four-wire resistive
	Memory	128 MB
	Flash	128 MB
	SD Card Slot	Yes
RTC	USB Port	USB2.0 Host + USB2.0 Client
	Real-time clock	Yes
I/O Port	Calendar	Yes
	COM1	RS232/RS422/RS485
	COM2	RS232/RS485
	COM3	--
	Ethernet	x1
Power	CANopen	--
	Wi-Fi	--
	4G LTE	--
	Audio Output	--
Enclosure	Rated Power	< 10W
	Power Voltage	DC 24V
	Input range	DC 12 ~ 28V
Environment	Shell Color	Grey
	Shell Material	PC+ABS
	Overall Size (mm)	271.8W*190.4H*41.2D
	Mounting Size (mm)	260.0W*179.0H
	Mounting Method	Panel Mount
	Weight (Kg)	1.2
Software	Working Temperature	-10 ~ 60°C
	Storage Temperature	-20 ~ 70°C
	Humidity	10 ~ 90%RH (Non-condensing)
	Vibration Resistance	21 ~ 25 Hz (X, Y, Z direction 2G/30 minutes)
Certificates	Cooling	Air Cooling
	Programming	PIStudio
	Data Tool	Yes
Certificates	Remote Control	--
	IP Code	IP65 (Front panel)
	CE	CE Marked
	FCC	FCC Class A
UL	--	

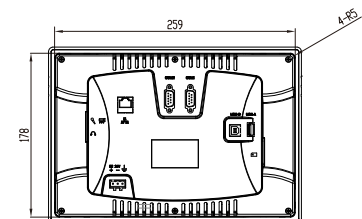
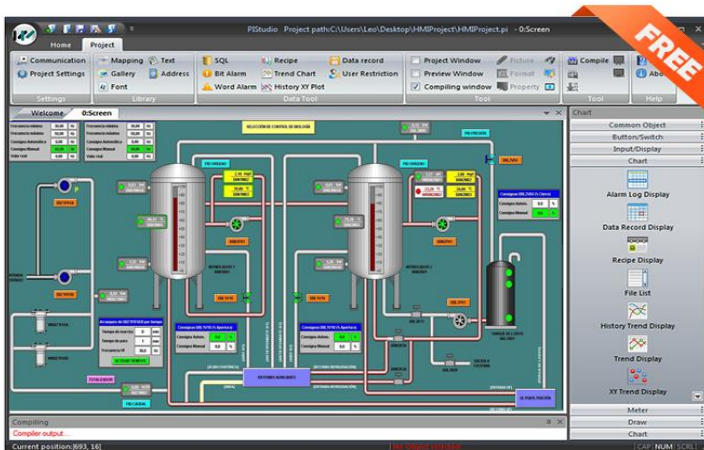
OVERVIEW



DIMENSION



SOFTWARE



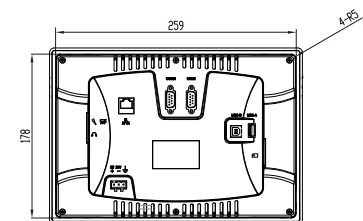
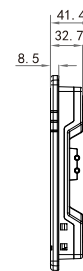
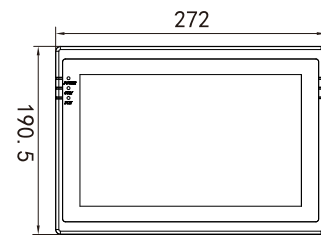
SPECIFICATIONS

Model		PI3102H-2S
Main	OS	Linux 3.2.0 QT based
	Processor	Cortex A8 600MHz
	Size	10.2"
Display	Screen	TFT
	Resolution	1024*600
	Color	16,000k colors
	Brightness (cd/m ²)	350
	Backlight	LED
	Backlight Lifetime	50,000 hours
	Touch Panel	High precision four-wire resistive
Storage	Memory	128 MB
	Flash	128 MB
	SD Card Slot	Yes
	USB Port	USB2.0 Host + USB2.0 Client
RTC	Real-time clock	Yes
	Calendar	Yes
I/O Port	COM1	CN1:RS422/RS485 CN2: RS232
	COM2	CN1:RS485 CN2: RS232
	COM3	--
	Ethernet	x1
	CANopen	--
	Wi-Fi	--
	4G LTE	--
Power	Audio Output	--
	Rated Power	< 10W
	Power Voltage	DC 24V
	Input range	DC 12 ~ 28V
Enclosure	Shell Color	Grey
	Shell Material	PC+ABS
	Overall Size (mm)	271.8W*190.4H*41.2D
	Mounting Size (mm)	260.0W*179.0H
	Mounting Method	Panel Mount
Environment	Weight (Kg)	1.2
	Working Temperature	-10 ~ 60°C
	Storage Temperature	-20 ~ 70°C
	Humidity	10 ~ 90%RH (Non-condensing)
	Vibration Resistance	22 ~ 25 Hz (X, Y, Z direction 2G/30 minutes)
Software	Cooling	Air Cooling
	Programming	PIStudio
	Data Tool	Yes
Certificates	Remote Control	--
	IP Code	IP65 (Front panel)
	CE	CE Marked
	FCC	FCC Class A
	UL	--

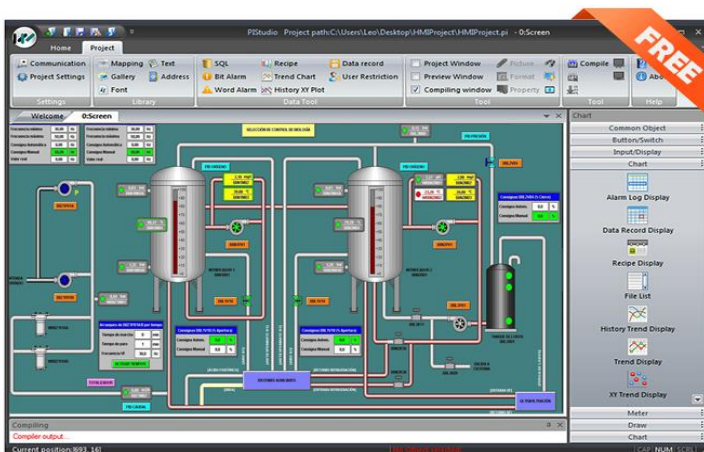
OVERVIEW



DIMENSION



SOFTWARE



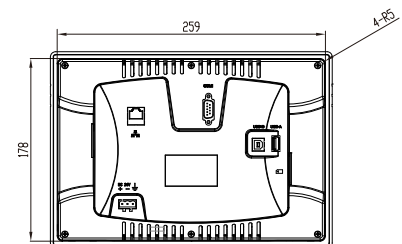
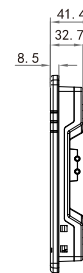
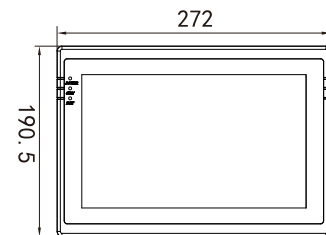
SPECIFICATIONS

Model		PI3102HE
Main	OS	Linux 3.2.0 QT based
	Processor	Cortex A8 600MHz
	Size	10.2"
Display	Screen	TFT
	Resolution	1024*600
	Color	16,000k colors
	Brightness (cd/m ²)	350
	Backlight	LED
	Backlight Lifetime	50,000 hours
	Touch Panel	High precision four-wire resistive
Storage	Memory	128 MB
	Flash	128 MB
	SD Card Slot	--
RTC	USB Port	USB2.0 Host + USB2.0 Client
	Real-time clock	Yes
I/O Port	Calendar	Yes
	COM1	CN1:RS422/RS485 CN2: RS232
	COM2	--
	COM3	--
	Ethernet	x1
	CANopen	--
	Wi-Fi	--
	4G LTE	--
	Audio Output	--
	Rated Power	< 10W
Power	Power Voltage	DC 24V
	Input range	DC 12 ~ 28V
Enclosure	Shell Color	Grey
	Shell Material	PC+ABS
	Overall Size (mm)	271.8W*190.4H*41.2D
	Mounting Size (mm)	260.0W*179.0H
	Mounting Method	Panel Mount
	Weight (Kg)	1.2
Environment	Working Temperature	-10 ~ 60°C
	Storage Temperature	-20 ~ 70°C
	Humidity	10 ~ 90%RH (Non-condensing)
	Vibration Resistance	23 ~ 25 Hz (X, Y, Z direction 2G/30 minutes)
Software	Cooling	Air Cooling
	Programming	PIStudio
	Data Tool	Yes
	Remote Control	--
Certificates	IP Code	IP65 (Front panel)
	CE	CE Marked
	FCC	FCC Class A
	UL	--

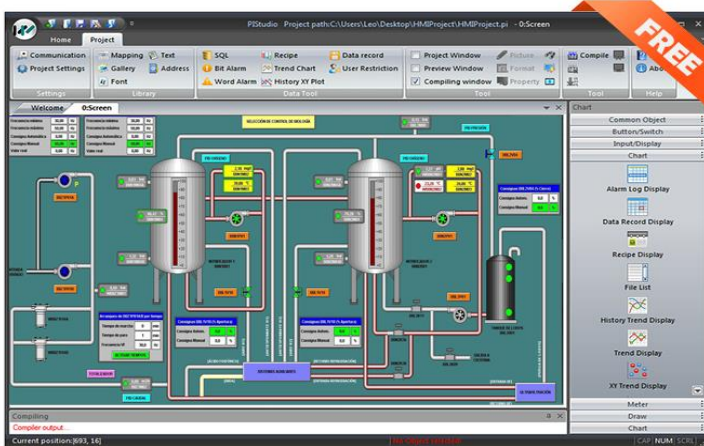
OVERVIEW



DIMENSION



SOFTWARE



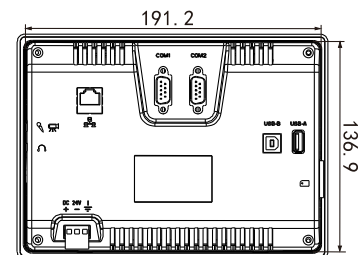
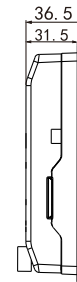
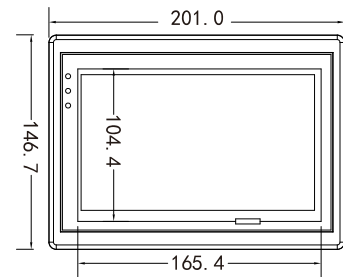
SPECIFICATIONS

	Model	PI8070
Main	OS	Linux 3.2.0 QT based
	Processor	Cortex A8 600MHz
	Size	7"
	Screen	TFT
Display	Resolution	800*480
	Color	16,000k colors
	Brightness (cd/m ²)	300
	Backlight	LED
	Backlight Lifetime	50,000 hours
	Touch Panel	High precision four-wire resistive
	Memory	512 MB
Storage	Flash	2 GB
	SD Card Slot	Yes
	USB Port	USB2.0 Host + USB2.0 Client
	RTC	Real-time clock
	Calendar	Yes
I/O Port	COM1	CN1:RS422/RS485 CN2: RS232
	COM2	CN1:RS485 CN2: RS232
	COM3	RS485
	Ethernet	x1
	CANopen	x1
	Wi-Fi	--
	4G LTE	--
	Audio Output	--
	Rated Power	< 10W
	Power Voltage	DC 24V
Input range	DC 12 ~ 28V	
Enclosure	Shell Color	Grey
	Shell Material	PC+ABS
	Overall Size (mm)	200.1W*146.0H*36.5D
	Mounting Size (mm)	192.0W*138.0H
	Mounting Method	Panel Mount
	Weight (Kg)	0.6
	Working Temperature	-10 ~ 60°C
Environment	Storage Temperature	-20 ~ 70°C
	Humidity	10 ~ 90%RH (Non-condensing)
	Vibration Resistance	24 ~ 25 Hz (X, Y, Z direction 2G/30 minutes)
	Cooling	Air Cooling
Software	Programming	PIStudio
	Data Tool	Yes
	Remote Control	--
Certificates	IP Code	IP65 (Front panel)
	CE	CE Marked
	FCC	FCC Class A
	UL	--

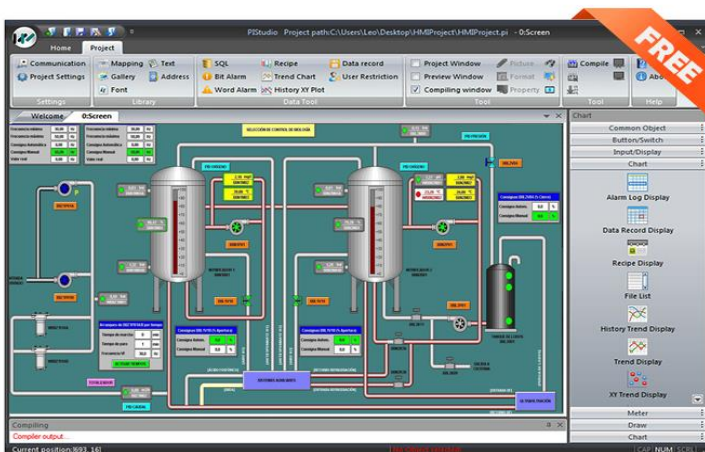
OVERVIEW



DIMENSION



SOFTWARE



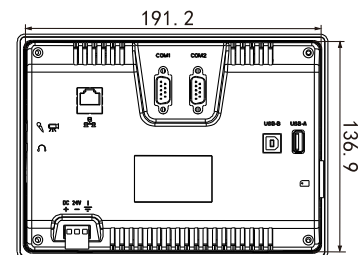
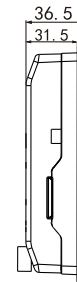
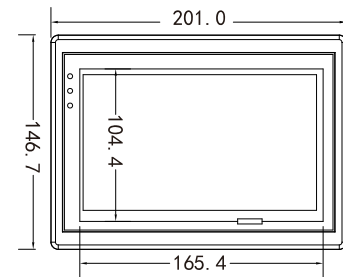
SPECIFICATIONS

Model		PI8070-R	
Main	OS	Linux 3.2.0 QT based	
	Processor	Cortex A8 600MHz	
	Size	7"	
Display	Screen	TFT	
	Resolution	800*480	
	Color	16,000k colors	
	Brightness (cd/m ²)	300	
	Backlight	LED	
	Backlight Lifetime	50,000 hours	
	Touch Panel	High precision four-wire resistive	
Storage	Memory	512 MB	
	Flash	2 GB	
	SD Card Slot	Yes	
	USB Port	USB2.0 Host + USB2.0 Client	
RTC	Real-time clock	Yes	
	Calendar	Yes	
I/O Port	COM1	CN1:RS422/RS485 CN2: RS232	
	COM2	CN1:RS485 CN2: RS232	
	COM3	RS485	
	Ethernet	x1	
	CANopen	x1	
	Wi-Fi	--	
	4G LTE	--	
	Audio Output	--	
	Power	Rated Power	< 10W
		Power Voltage	DC 24V
Input range		DC 12 ~ 28V	
Enclosure	Shell Color	Grey	
	Shell Material	PC+ABS	
	Overall Size (mm)	200.1W*146.0H*36.5D	
	Mounting Size (mm)	192.0W*138.0H	
	Mounting Method	Panel Mount	
	Weight (Kg)	0.6	
Environment	Working Temperature	-10 ~ 60°C	
	Storage Temperature	-20 ~ 70°C	
	Humidity	10 ~ 90%RH (Non-condensing)	
	Vibration Resistance	24 ~ 25 Hz (X, Y, Z direction 2G/30 minutes)	
Software	Cooling	Air Cooling	
	Programming	PIStudio	
	Data Tool	Yes	
	Remote Control	Yes	
Certificates	IP Code	IP65 (Front panel)	
	CE	CE Marked	
	FCC	FCC Class A	
	UL	--	

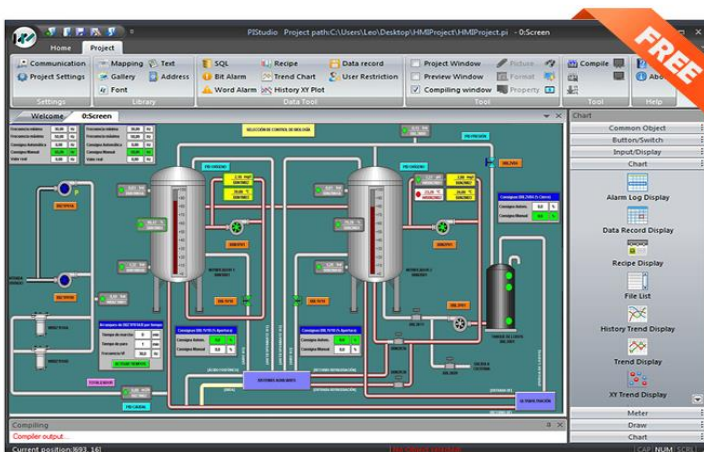
OVERVIEW



DIMENSION



SOFTWARE



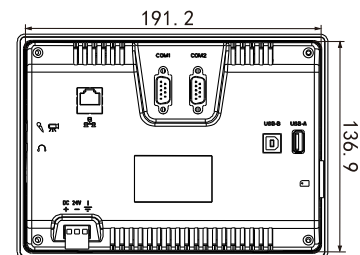
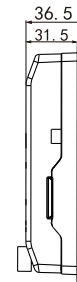
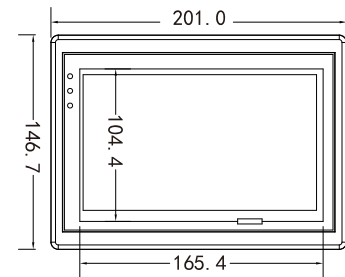
SPECIFICATIONS

Model		PI8070-C
Main	OS	Linux 3.2.0 QT based
	Processor	Cortex A8 600MHz
	Size	7"
Display	Screen	TFT
	Resolution	800*480
	Color	16,000k colors
	Brightness (cd/m ²)	300
	Backlight	LED
	Backlight Lifetime	50,000 hours
	Touch Panel	High precision four-wire resistive
Storage	Memory	512 MB
	Flash	2 GB
	SD Card Slot	Yes
	USB Port	USB2.0 Host + USB2.0 Client
RTC	Real-time clock	Yes
	Calendar	Yes
I/O Port	COM1	CN1:RS422/RS485 CN2: RS232
	COM2	CN1:RS485 CN2: RS232
	COM3	RS485
	Ethernet	x1
	CANopen	x2
	Wi-Fi	--
	4G LTE	--
	Audio Output	--
	Rated Power	< 10W
	Power Voltage	DC 24V
Enclosure	Input range	DC 12 ~ 28V
	Shell Color	Grey
	Shell Material	PC+ABS
Environment	Overall Size (mm)	200.1W*146.0H*36.5D
	Mounting Size (mm)	192.0W*138.0H
	Mounting Method	Panel Mount
Software	Weight (Kg)	0.6
	Working Temperature	-10 ~ 60°C
	Storage Temperature	-20 ~ 70°C
	Humidity	10 ~ 90%RH (Non-condensing)
Certificates	Vibration Resistance	24 ~ 25 Hz (X, Y, Z direction 2G/30 minutes)
	Cooling	Air Cooling
	Programming	PIStudio
Certificates	Programming	PIStudio
	Data Tool	Yes
Certificates	Remote Control	--
	IP Code	IP65 (Front panel)
	CE	CE Marked
Certificates	FCC	FCC Class A
	UL	--

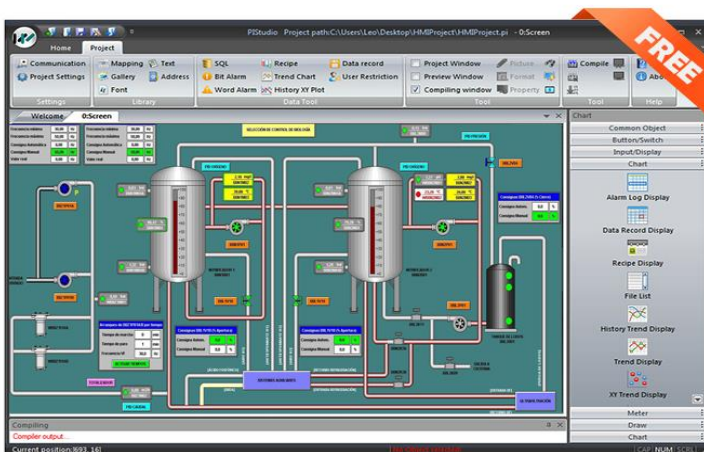
OVERVIEW



DIMENSION



SOFTWARE



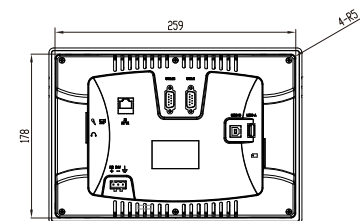
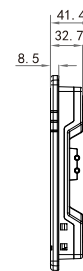
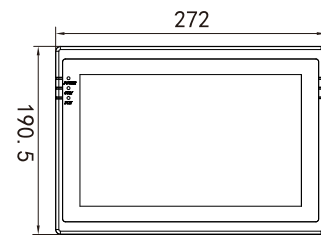
SPECIFICATIONS

	Model	PI8102
Main	OS	Linux 3.2.0 QT based
	Processor	Cortex A8 600MHz
	Size	10.2"
Display	Screen	TFT
	Resolution	800*480
	Color	16,000k colors
	Brightness (cd/m ²)	350
	Backlight	LED
	Backlight Lifetime	50,000 hours
	Touch Panel	High precision four-wire resistive
Storage	Memory	512 MB
	Flash	2 GB
	SD Card Slot	Yes
	USB Port	USB2.0 Host + USB2.0 Client
RTC	Real-time clock	Yes
	Calendar	Yes
I/O Port	COM1	CN1:RS422/RS485 CN2: RS232
	COM2	CN1:RS485 CN2: RS232
	COM3	RS485
	Ethernet	x1
	CANopen	x1
	Wi-Fi	--
	4G LTE	--
	Audio Output	--
	Rated Power	< 10W
Power	Power Voltage	DC 24V
	Input range	DC 12 ~ 28V
	Shell Color	Grey
Enclosure	Shell Material	PC+ABS
	Overall Size (mm)	271.8W*190.4H*41.2D
	Mounting Size (mm)	260.0W*179.0H
	Mounting Method	Panel Mount
	Weight (Kg)	1.2
Environment	Working Temperature	-10 ~ 60°C
	Storage Temperature	-20 ~ 70°C
	Humidity	10 ~ 90%RH (Non-condensing)
	Vibration Resistance	25 ~ 25 Hz (X, Y, Z direction 2G/30 minutes)
Software	Cooling	Air Cooling
	Programming	PIStudio
	Data Tool	Yes
Certificates	Remote Control	--
	IP Code	IP65 (Front panel)
	CE	CE Marked
	FCC	FCC Class A
	UL	--

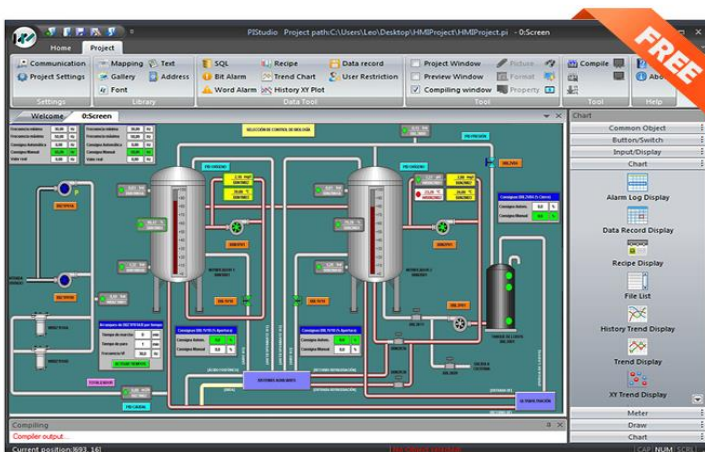
OVERVIEW



DIMENSION



SOFTWARE



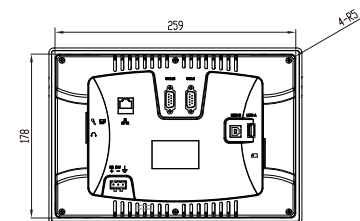
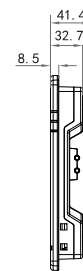
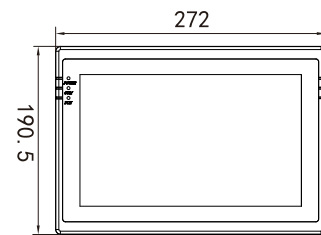
SPECIFICATIONS

Model		PI8102-R
Main	OS	Linux 3.2.0 QT based
	Processor	Cortex A8 600MHz
	Size	10.2"
Display	Screen	TFT
	Resolution	800*480
	Color	16,000k colors
	Brightness (cd/m ²)	350
	Backlight	LED
	Backlight Lifetime	50,000 hours
	Touch Panel	High precision four-wire resistive
Storage	Memory	512 MB
	Flash	2 GB
	SD Card Slot	Yes
	USB Port	USB2.0 Host + USB2.0 Client
RTC	Real-time clock	Yes
	Calendar	Yes
I/O Port	COM1	CN1:RS422/RS485 CN2: RS232
	COM2	CN1:RS485 CN2: RS232
	COM3	RS485
	Ethernet	x1
	CANopen	x1
	Wi-Fi	--
	4G LTE	--
	Audio Output	--
	Rated Power	< 10W
Power	Power Voltage	DC 24V
	Input range	DC 12 ~ 28V
	Shell Color	Grey
Enclosure	Shell Material	PC+ABS
	Overall Size (mm)	271.8W*190.4H*41.2D
	Mounting Size (mm)	260.0W*179.0H
	Mounting Method	Panel Mount
	Weight (Kg)	1.2
Environment	Working Temperature	-10 ~ 60°C
	Storage Temperature	-20 ~ 70°C
	Humidity	10 ~ 90%RH (Non-condensing)
	Vibration Resistance	25 ~ 25 Hz (X, Y, Z direction 2G/30 minutes)
Software	Cooling	Air Cooling
	Programming	PIStudio
	Data Tool	Yes
	Remote Control	Yes
Certificates	IP Code	IP65 (Front panel)
	CE	CE Marked
	FCC	FCC Class A
	UL	--

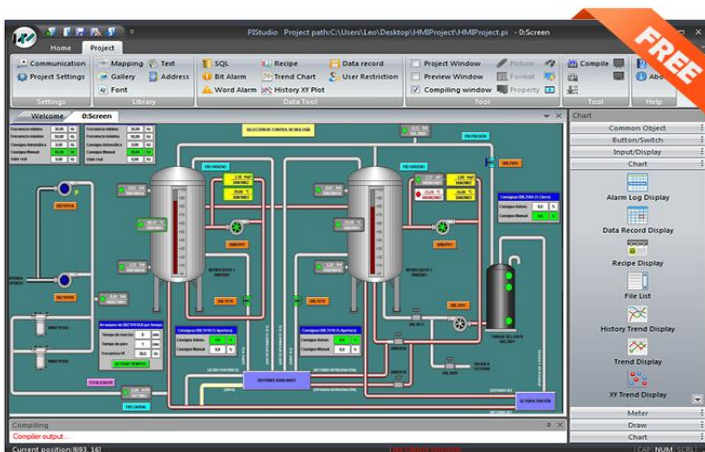
OVERVIEW



DIMENSION



SOFTWARE



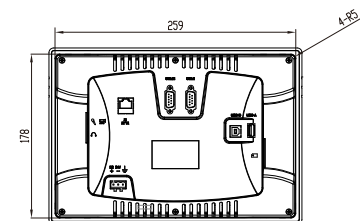
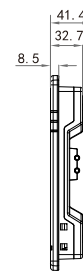
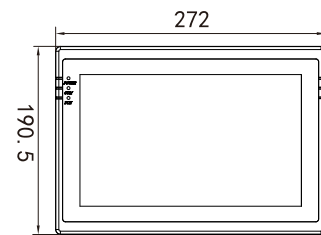
SPECIFICATIONS

Model		PI8102H
Main	OS	Linux 3.2.0 QT based
	Processor	Cortex A8 600MHz
	Size	10.2"
Display	Screen	TFT
	Resolution	1024*600
	Color	16,000k colors
	Brightness (cd/m ²)	350
	Backlight	LED
	Backlight Lifetime	50,000 hours
	Touch Panel	High precision four-wire resistive
Storage	Memory	512 MB
	Flash	2 GB
	SD Card Slot	Yes
	USB Port	USB2.0 Host + USB2.0 Client
RTC	Real-time clock	Yes
	Calendar	Yes
I/O Port	COM1	CN1:RS422/RS485 CN2: RS232
	COM2	CN1:RS485 CN2: RS232
	COM3	RS485
	Ethernet	x1
	CANopen	x1
	Wi-Fi	--
	4G LTE	--
	Audio Output	--
	Rated Power	< 10W
	Power Voltage	DC 24V
Power	Input range	DC 12 ~ 28V
	Shell Color	Grey
	Shell Material	PC+ABS
Enclosure	Overall Size (mm)	271.8W*190.4H*41.2D
	Mounting Size (mm)	260.0W*179.0H
	Mounting Method	Panel Mount
	Weight (Kg)	1.2
Environment	Working Temperature	-10 ~ 60°C
	Storage Temperature	-20 ~ 70°C
	Humidity	10 ~ 90%RH (Non-condensing)
	Vibration Resistance	26 ~ 25 Hz (X, Y, Z direction 2G/30 minutes)
Software	Cooling	Air Cooling
	Programming	PIStudio
	Data Tool	Yes
Certificates	Remote Control	--
	IP Code	IP65 (Front panel)
	CE	CE Marked
Certificates	FCC	FCC Class A
	UL	--

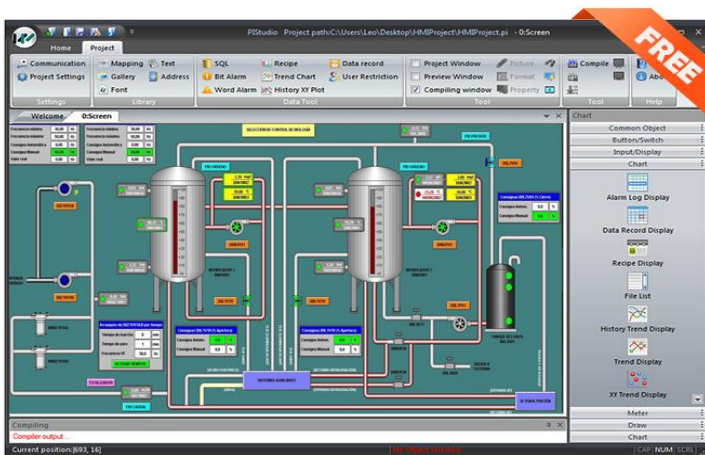
OVERVIEW



DIMENSION



SOFTWARE



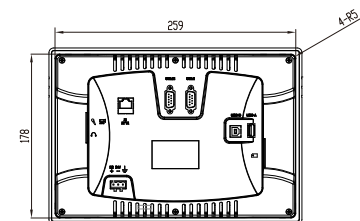
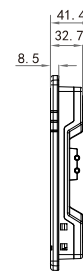
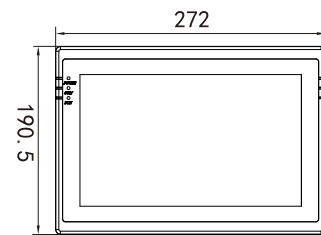
SPECIFICATIONS

Model		PI8102H-R
Main	OS	Linux 3.2.0 QT based
	Processor	Cortex A8 600MHz
	Size	10.2"
Display	Screen	TFT
	Resolution	1024*600
	Color	16,000k colors
	Brightness (cd/m ²)	350
	Backlight	LED
	Backlight Lifetime	50,000 hours
	Touch Panel	High precision four-wire resistive
Storage	Memory	512 MB
	Flash	2 GB
	SD Card Slot	Yes
	USB Port	USB2.0 Host + USB2.0 Client
RTC	Real-time clock	Yes
	Calendar	Yes
I/O Port	COM1	CN1:RS422/RS485 CN2: RS232
	COM2	CN1:RS485 CN2: RS232
	COM3	RS485
	Ethernet	x1
	CANopen	x1
	Wi-Fi	--
	4G LTE	--
	Audio Output	--
	Rated Power	< 10W
	Power Voltage	DC 24V
Power	Input range	DC 12 ~ 28V
	Shell Color	Grey
	Shell Material	PC+ABS
Enclosure	Overall Size (mm)	271.8W*190.4H*41.2D
	Mounting Size (mm)	260.0W*179.0H
	Mounting Method	Panel Mount
	Weight (Kg)	1.2
Environment	Working Temperature	-10 ~ 60°C
	Storage Temperature	-20 ~ 70°C
	Humidity	10 ~ 90%RH (Non-condensing)
	Vibration Resistance	26 ~ 25 Hz (X, Y, Z direction 2G/30 minutes)
Software	Cooling	Air Cooling
	Programming	PIStudio
	Data Tool	Yes
	Remote Control	Yes
Certificates	IP Code	IP65 (Front panel)
	CE	CE Marked
	FCC	FCC Class A
	UL	--

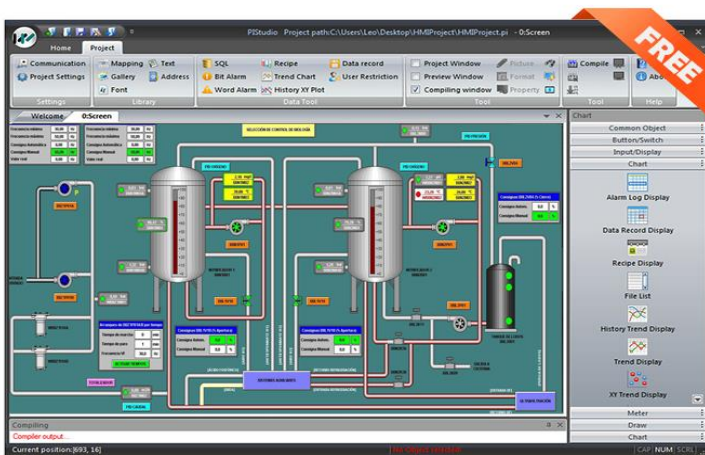
OVERVIEW



DIMENSION



SOFTWARE



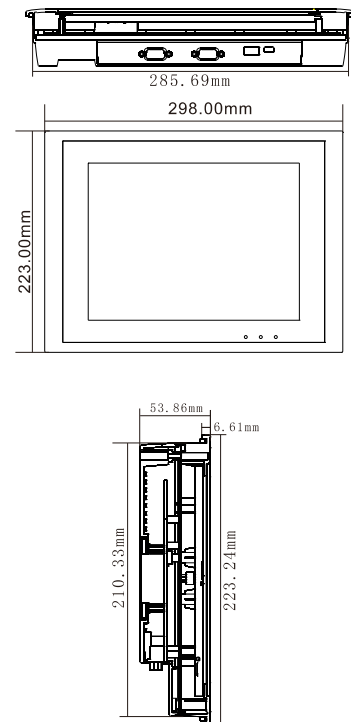
SPECIFICATIONS

	Model	PI8104
Main	OS	Linux 3.2.0 QT based
	Processor	Cortex A8 600MHz
	Size	10.4"
Display	Screen	TFT
	Resolution	800*600
	Color	16,000k colors
	Brightness (cd/m ²)	300
	Backlight	LED
	Backlight Lifetime	50,000 hours
	Touch Panel	High precision four-wire resistive
Storage	Memory	512 MB
	Flash	2 GB
	SD Card Slot	Yes
	USB Port	USB2.0 Host + USB2.0 Client
RTC	Real-time clock	Yes
	Calendar	Yes
I/O Port	COM1	CN1:RS422/RS485 CN2: RS232
	COM2	CN1:RS485 CN2: RS232
	COM3	RS485
	Ethernet	x1
	CANopen	x1
	Wi-Fi	--
	4G LTE	--
	Audio Output	--
	Rated Power	< 10W
	Power Voltage	DC 24V
Power	Input range	DC 12 ~ 28V
	Shell Color	Grey
	Shell Material	PC+ABS
Enclosure	Overall Size (mm)	298.0W*223.0H*53.5D
	Mounting Size (mm)	288.0W*212.0H
	Mounting Method	Panel Mount
	Weight (Kg)	1.9
Environment	Working Temperature	-10 ~ 60°C
	Storage Temperature	-20 ~ 70°C
	Humidity	10 ~ 90%RH (Non-condensing)
	Vibration Resistance	27 ~ 25 Hz (X, Y, Z direction 2G/30 minutes)
Software	Cooling	Air Cooling
	Programming	PIStudio
	Data Tool	Yes
Certificates	Remote Control	--
	IP Code	IP65 (Front panel)
	CE	CE Marked
	FCC	FCC Class A
	UL	--

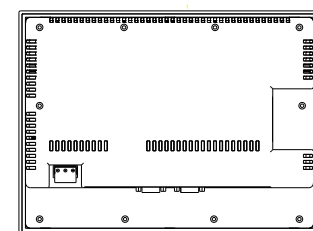
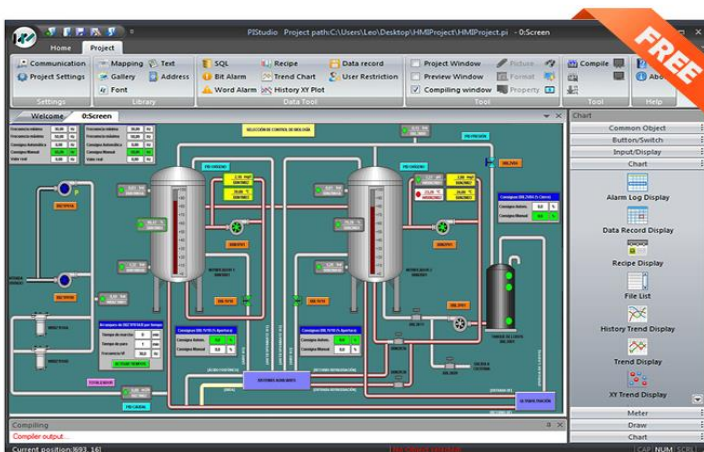
OVERVIEW



DIMENSION



SOFTWARE



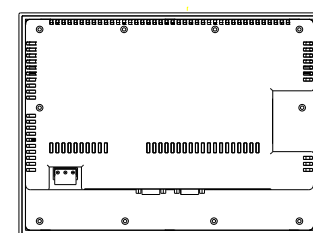
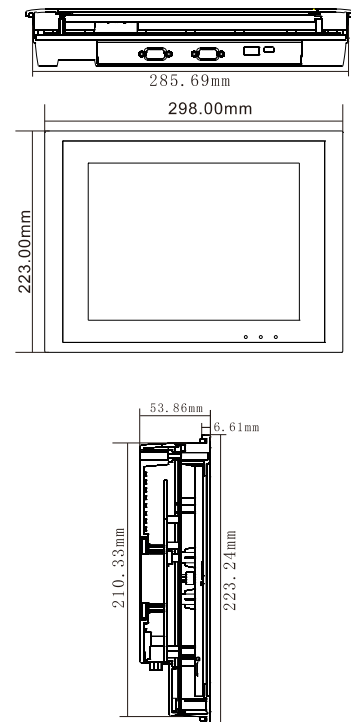
SPECIFICATIONS

Model		PI8104-R
Main	OS	Linux 3.2.0 QT based
	Processor	Cortex A8 600MHz
	Size	10.4"
Display	Screen	TFT
	Resolution	800*600
	Color	16,000k colors
	Brightness (cd/m ²)	300
	Backlight	LED
	Backlight Lifetime	50,000 hours
	Touch Panel	High precision four-wire resistive
Storage	Memory	512 MB
	Flash	2 GB
	SD Card Slot	Yes
	USB Port	USB2.0 Host + USB2.0 Client
RTC	Real-time clock	Yes
	Calendar	Yes
I/O Port	COM1	CN1:RS422/RS485 CN2: RS232
	COM2	CN1:RS485 CN2: RS232
	COM3	RS485
	Ethernet	x1
	CANopen	x1
	Wi-Fi	--
	4G LTE	--
	Audio Output	--
	Rated Power	< 10W
	Power Voltage	DC 24V
Power	Input range	DC 12 ~ 28V
	Shell Color	Grey
	Shell Material	PC+ABS
Enclosure	Overall Size (mm)	298.0W*223.0H*53.5D
	Mounting Size (mm)	288.0W*212.0H
	Mounting Method	Panel Mount
	Weight (Kg)	1.9
Environment	Working Temperature	-10 ~ 60°C
	Storage Temperature	-20 ~ 70°C
	Humidity	10 ~ 90%RH (Non-condensing)
	Vibration Resistance	27 ~ 25 Hz (X, Y, Z direction 2G/30 minutes)
Software	Cooling	Air Cooling
	Programming	PIStudio
	Data Tool	Yes
Certificates	Remote Control	Yes
	IP Code	IP65 (Front panel)
	CE	CE Marked
	FCC	FCC Class A
	UL	--

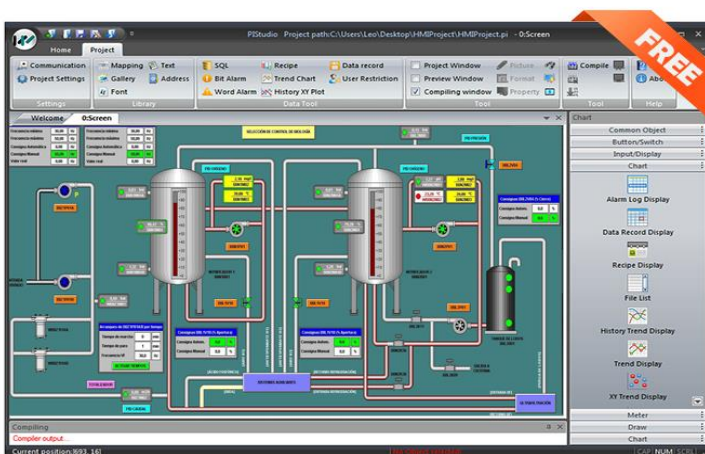
OVERVIEW



DIMENSION



SOFTWARE



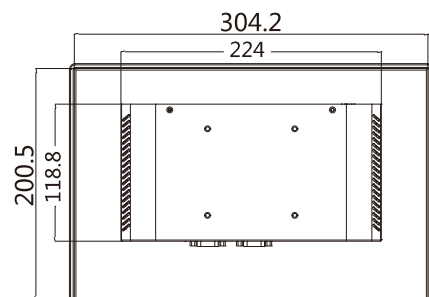
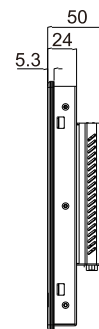
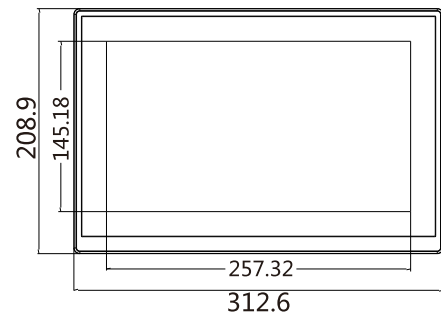
SPECIFICATIONS

	Model	PI9120
Main	OS	Linux 3.4.39 QT based
	Processor	Cortex A9 1.4GHz
	Size	12"
Display	Screen	TFT
	Resolution	1920*1080
	Color	16,000k colors
	Brightness (cd/m ²)	250
	Backlight	LED
	Backlight Lifetime	50,000 hours
	Touch Panel	High precision four-wire resistive
Storage	Memory	512 MB
	Flash	4 GB
	SD Card Slot	Yes
	USB Port	USB2.0 Host + USB2.0 Client
RTC	Real-time clock	Yes
	Calendar	Yes
I/O Port	COM1	CN1:RS422/RS485 CN2: RS232
	COM2	CN1:RS485 CN2: RS232
	COM3	RS485
	Ethernet	x1
	CANopen	--
	Wi-Fi	--
	4G LTE	--
Power	Audio Output	--
	Rated Power	< 20W
	Power Voltage	DC 24V
	Input range	DC 12 ~ 28V
Enclosure	Shell Color	Silvery
	Shell Material	Aluminium+Steel Plate
	Overall Size (mm)	312.6W*208.9H*49.9D
	Mounting Size (mm)	306.0W*202.0H
	Mounting Method	Panel Mount, VESA 75*75mm
	Weight (Kg)	2.2
Environment	Working Temperature	-10 ~ 60°C
	Storage Temperature	-20 ~ 70°C
	Humidity	10 ~ 90%RH (Non-condensing)
	Vibration Resistance	28 ~ 25 Hz (X, Y, Z direction 2G/30 minutes)
Software	Cooling	Air Cooling
	Programming	PIStudio
	Data Tool	Yes
Certificates	Remote Control	--
	IP Code	IP65 (Front panel)
	CE	CE Marked
	FCC	FCC Class A
UL	--	

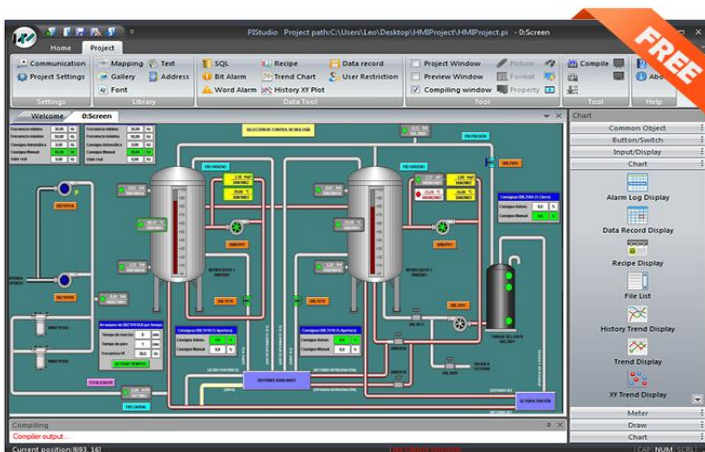
OVERVIEW



DIMENSION



SOFTWARE



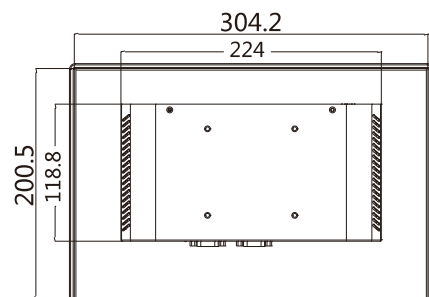
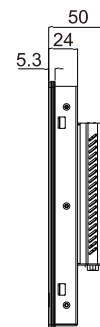
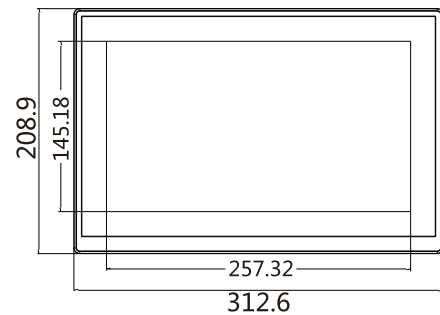
SPECIFICATIONS

Model		PI9120-R
Main	OS	Linux 3.4.39 QT based
	Processor	Cortex A9 1.4GHz
	Size	12"
Display	Screen	TFT
	Resolution	1920*1080
	Color	16,000k colors
	Brightness (cd/m ²)	250
	Backlight	LED
	Backlight Lifetime	50,000 hours
	Touch Panel	High precision four-wire resistive
Storage	Memory	512 MB
	Flash	4 GB
	SD Card Slot	Yes
	USB Port	USB2.0 Host + USB2.0 Client
RTC	Real-time clock	Yes
	Calendar	Yes
I/O Port	COM1	CN1:RS422/RS485 CN2: RS232
	COM2	CN1:RS485 CN2: RS232
	COM3	RS485
	Ethernet	x1
	CANopen	--
	Wi-Fi	--
	4G LTE	--
	Audio Output	--
	Rated Power	< 20W
Power	Power Voltage	DC 24V
	Input range	DC 12 ~ 28V
	Shell Color	Silvery
Enclosure	Shell Material	Aluminium+Steel Plate
	Overall Size (mm)	312.6W*208.9H*49.9D
	Mounting Size (mm)	306.0W*202.0H
	Mounting Method	Panel Mount, VESA 75*75mm
	Weight (Kg)	2.2
Environment	Working Temperature	-10 ~ 60°C
	Storage Temperature	-20 ~ 70°C
	Humidity	10 ~ 90%RH (Non-condensing)
	Vibration Resistance	28 ~ 25 Hz (X, Y, Z direction 2G/30 minutes)
Software	Cooling	Air Cooling
	Programming	PIStudio
	Data Tool	Yes
Certificates	Remote Control	Yes
	IP Code	IP65 (Front panel)
	CE	CE Marked
FCC	FCC Class A	
UL	--	

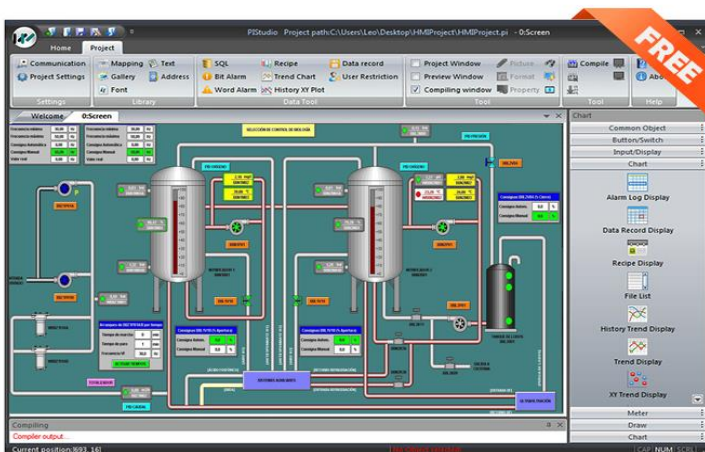
OVERVIEW



DIMENSION



SOFTWARE



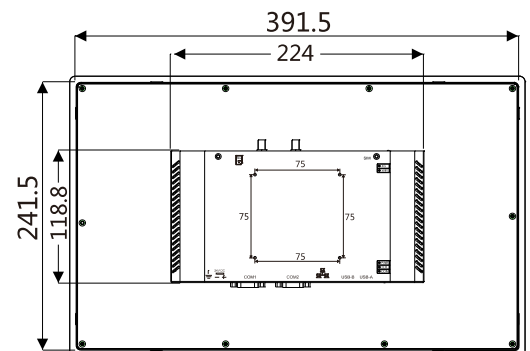
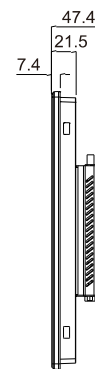
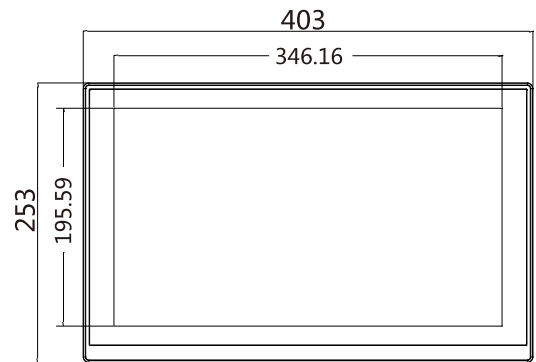
SPECIFICATIONS

	Model	PI9150
Main	OS	Linux 3.4.39 QT based
	Processor	Cortex A9 1.4GHz
	Size	15"
Display	Screen	TFT
	Resolution	1920*1080
	Color	16,000k colors
	Brightness (cd/m ²)	250
	Backlight	LED
	Backlight Lifetime	50,000 hours
	Touch Panel	High precision four-wire resistive
Storage	Memory	512 MB
	Flash	4 GB
	SD Card Slot	Yes
	USB Port	USB2.0 Host + USB2.0 Client
RTC	Real-time clock	Yes
	Calendar	Yes
I/O Port	COM1	CN1:RS422/RS485 CN2: RS232
	COM2	CN1:RS485 CN2: RS232
	COM3	RS485
	Ethernet	x1
	CANopen	--
	Wi-Fi	--
	4G LTE	--
	Audio Output	--
	Rated Power	< 20W
Power	Power Voltage	DC 24V
	Input range	DC 12 ~ 28V
	Shell Color	Silvery
Enclosure	Shell Material	Aluminium+Steel Plate
	Overall Size (mm)	402.9W*253.2H*47.0D
	Mounting Size (mm)	394.0W*244.0H
	Mounting Method	Panel Mount, VESA 75*75mm
	Weight (Kg)	3.1
Environment	Working Temperature	-10 ~ 60°C
	Storage Temperature	-20 ~ 70°C
	Humidity	10 ~ 90%RH (Non-condensing)
	Vibration Resistance	29 ~ 25 Hz (X, Y, Z direction 2G/30 minutes)
Software	Cooling	Air Cooling
	Programming	PISudio
	Data Tool	Yes
Certificates	Remote Control	--
	IP Code	IP65 (Front panel)
	CE	CE Marked
	FCC	FCC Class A
	UL	--

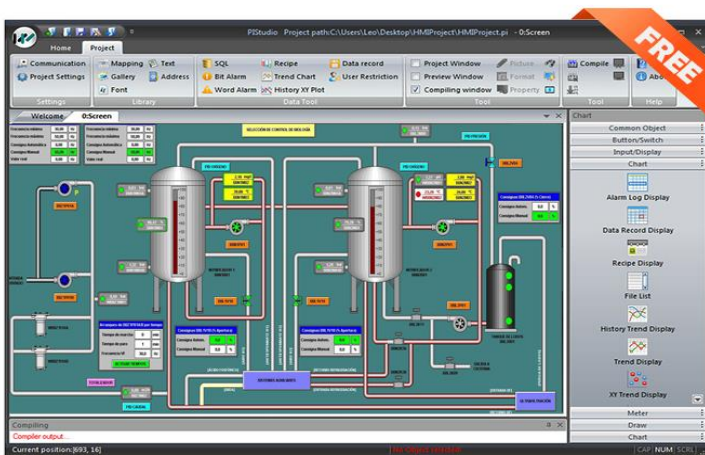
OVERVIEW



DIMENSION



SOFTWARE



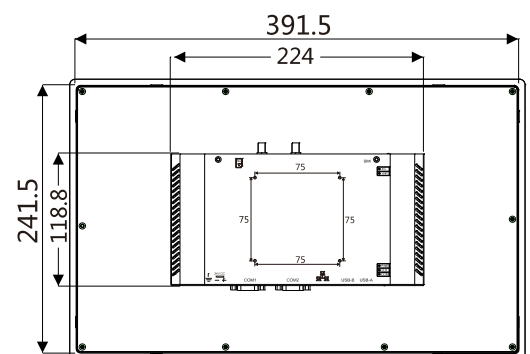
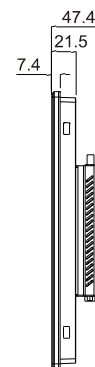
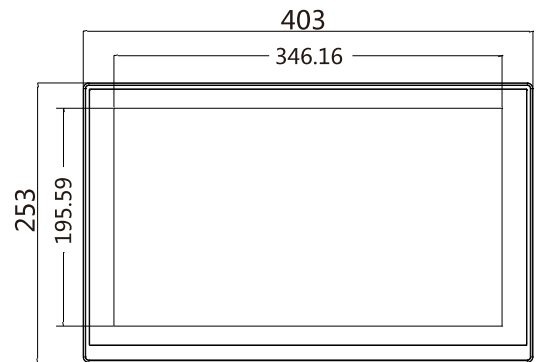
SPECIFICATIONS

Model		PI9150-R
Main	OS	Linux 3.4.39 QT based
	Processor	Cortex A9 1.4GHz
	Size	15"
Display	Screen	TFT
	Resolution	1920*1080
	Color	16,000k colors
	Brightness (cd/m ²)	250
	Backlight	LED
	Backlight Lifetime	50,000 hours
	Touch Panel	High precision four-wire resistive
Storage	Memory	512 MB
	Flash	4 GB
	SD Card Slot	Yes
	USB Port	USB2.0 Host + USB2.0 Client
RTC	Real-time clock	Yes
	Calendar	Yes
I/O Port	COM1	CN1:RS422/RS485 CN2: RS232
	COM2	CN1:RS485 CN2: RS232
	COM3	RS485
	Ethernet	x1
	CANopen	--
	Wi-Fi	--
	4G LTE	--
	Audio Output	--
	Rated Power	< 20W
Power	Power Voltage	DC 24V
	Input range	DC 12 ~ 28V
	Shell Color	Silvery
Enclosure	Shell Material	Aluminium+Steel Plate
	Overall Size (mm)	402.9W*253.2H*47.0D
	Mounting Size (mm)	394.0W*244.0H
	Mounting Method	Panel Mount, VESA 75*75mm
	Weight (Kg)	3.1
Environment	Working Temperature	-10 ~ 60°C
	Storage Temperature	-20 ~ 70°C
	Humidity	10 ~ 90%RH (Non-condensing)
	Vibration Resistance	29 ~ 25 Hz (X, Y, Z direction 2G/30 minutes)
Software	Cooling	Air Cooling
	Programming	PISudio
	Data Tool	Yes
Certificates	Remote Control	--
	IP Code	IP65 (Front panel)
	CE	CE Marked
	FCC	FCC Class A
UL	--	

OVERVIEW



DIMENSION



SOFTWARE

