

Communicate with PLC device



WECON Technology Co., Ltd.

Website: <http://www.we-con.com.cn/en>

Technical Support: liux@we-con.com.cn

Skype: "fewkkj" or "Jason.chen842"

Phone: 86-591-87868869

QQ Group: 465230233

Technical forum: <http://wecon.freeforums.net/>

WECON Technology Co., Ltd.

General

HMI could communicate with PLC, WECON HMI could support many PLC protocol, it is easy to operate and set communication parameters. This demo shows how to make a communication with PLC device, use WECON LX3V Series PLC as an example.

Make a communication

1. Select protocol;

Please select the protocol, when creating a new project.

- 1) PLC type: It means PLC brand, like WECON;
- 2) PLC model: It shows the model of PLC, such as LX3V;

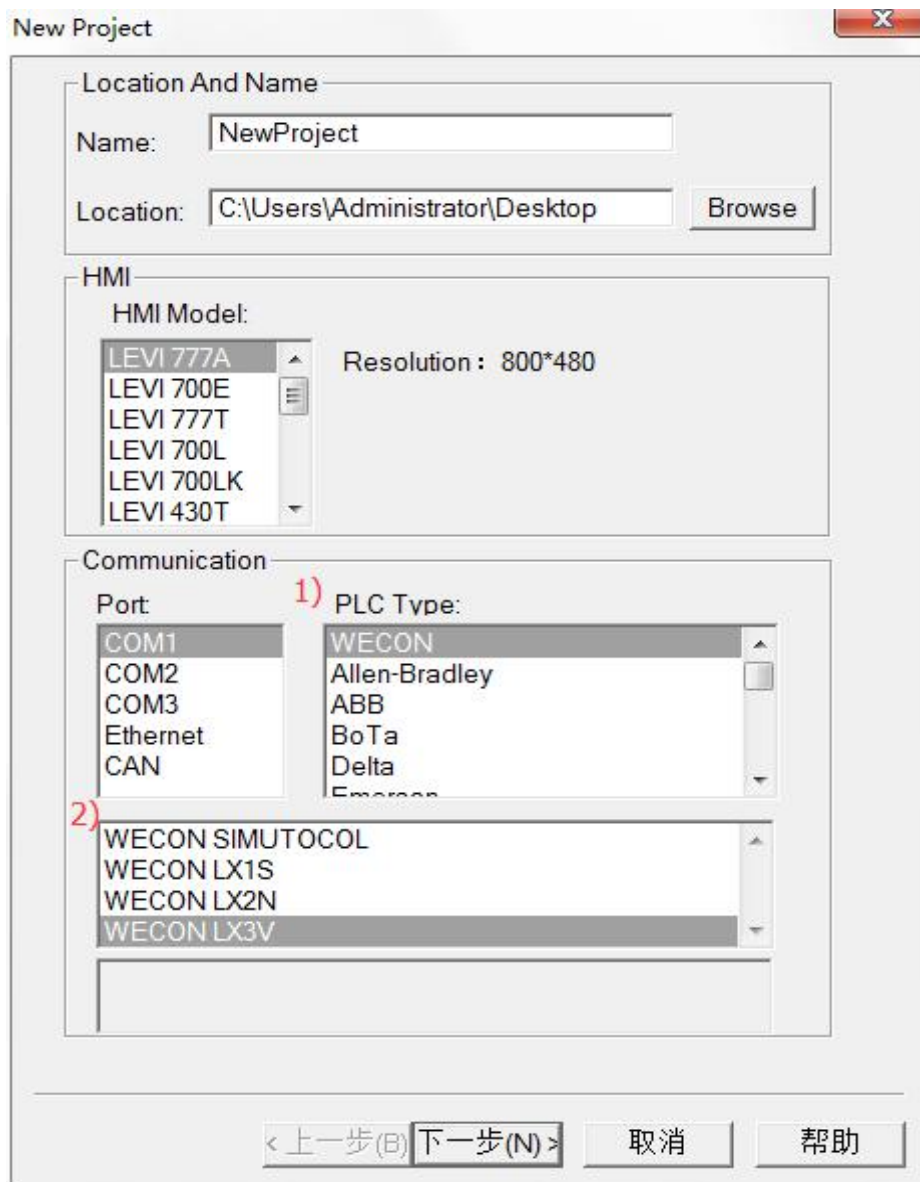


FIG 1

If you want to change the protocol for existing project, please click “Setting”->”Communication” to open the setting windows.

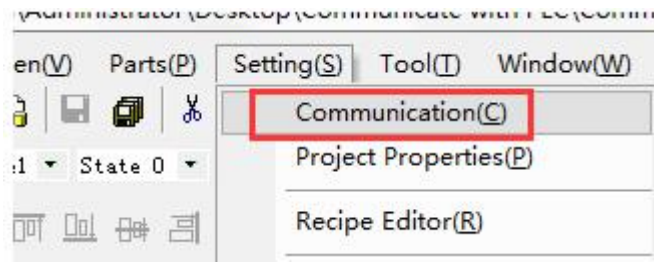


FIG 2

- 1) Please click “Setting”;
- 2) And then change the protocol;
- 3) Set communication parameters the same with PLC.

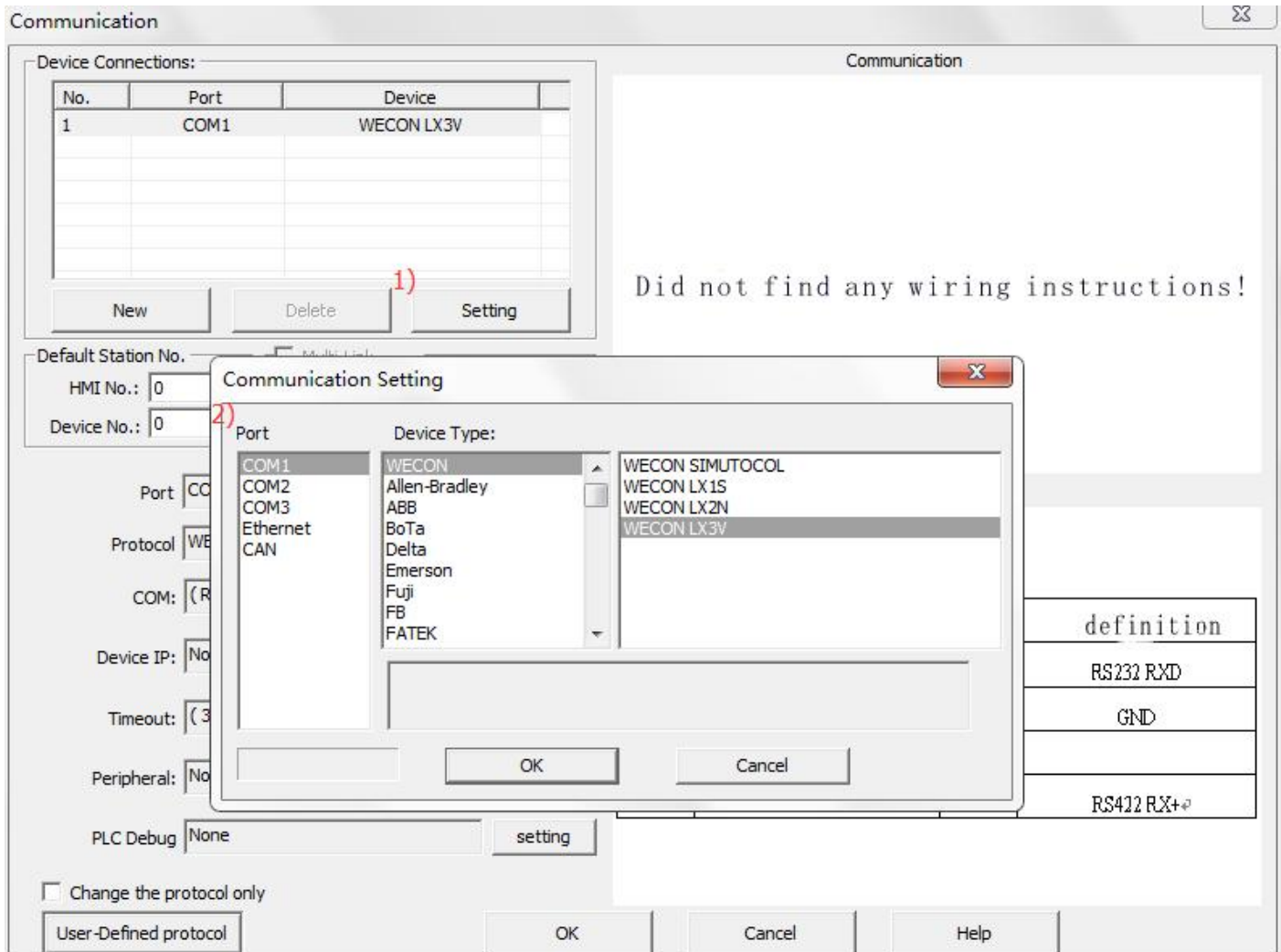


FIG 3

2. Edit PLC address in HMI screen;
 - 1) Click “Edit” to open the address setting windows;
 - 2) Connection: select the serial port in HMI;

- 3) Address type: All the PLC address types will be display in this list, such as D;
- 4) Address No.: Please input the number of this address, such as 0;

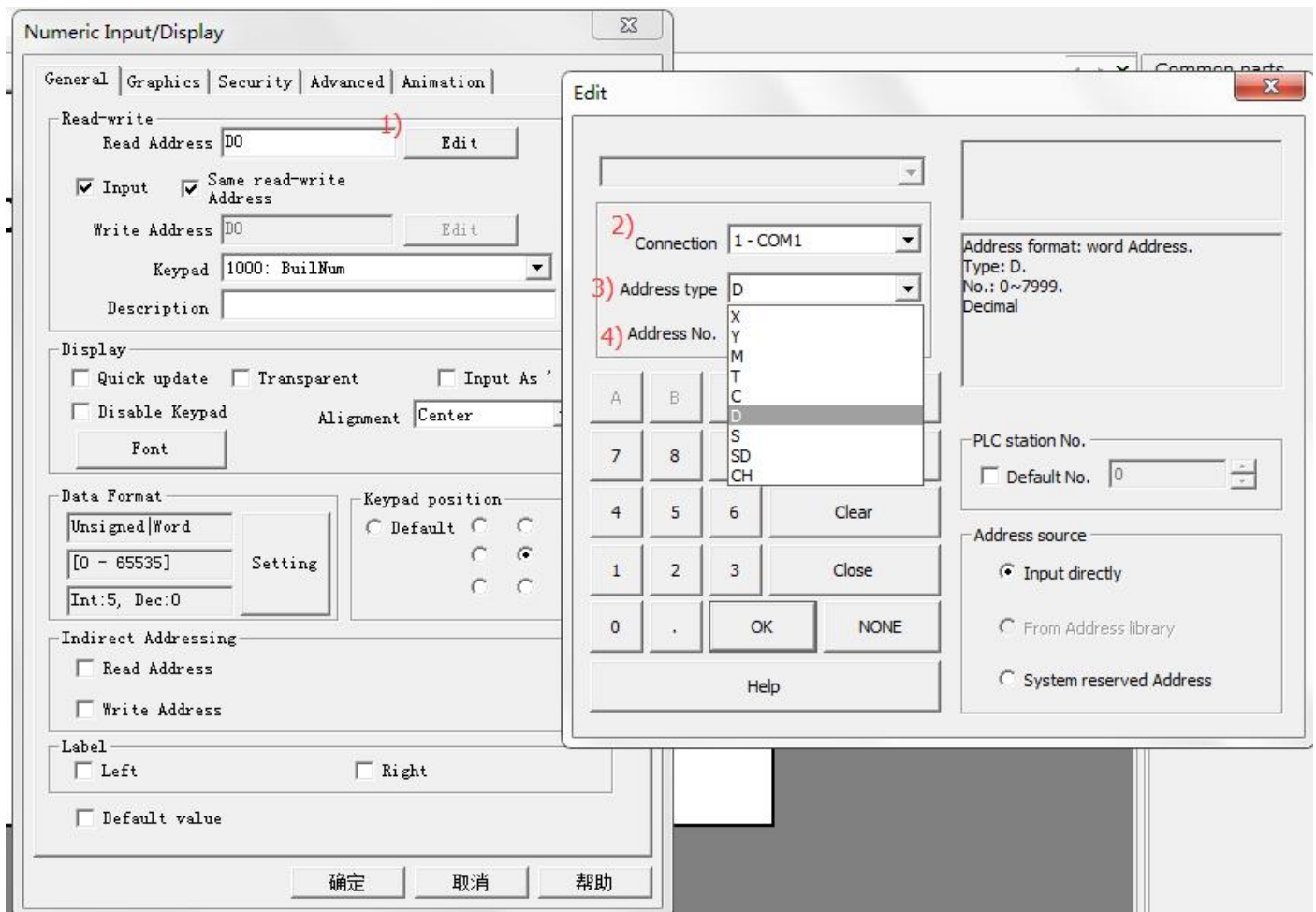


FIG 4