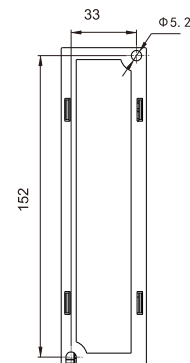
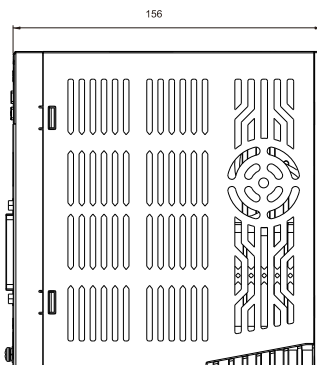
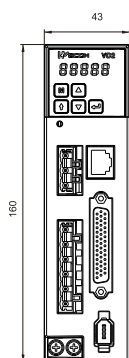


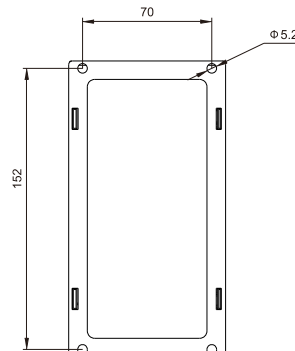
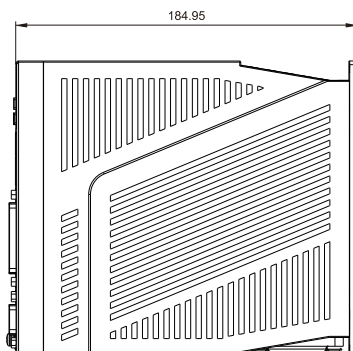
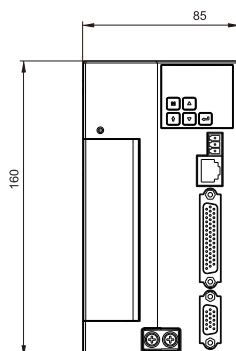
## VD2 Servo Drive (0.4-0.75KW)

Drive Model	Motor Model	Power (kw)	Speed (rpm)
VD2-010SA1G	WD60M-04030S-A1F	0.4	3000
VD2-010SA1G	WD60M-04030S-A1G	0.4	3000
VD2-014SA1G	WD80M-07530S-A1F	0.75	3000
VD2-014SA1G	WD80M-07530S-A1G	0.75	3000



## VD2 Servo Drive (1.0-2.3KW)

Drive Model	Motor Model	Power (kw)	Speed (rpm)
VD2-016SE1G-E083	WD80M-10025S-E1B	1.0	2500
VD2-016SE1G-E083	WD80M-10025S-E1C	1.0	2500
VD2-016SE1G-E092	WD130M-10025S-E1B	1.0	2500
VD2-016SE1G-E092	WD130M-10025S-E1C	1.0	2500
VD2-019SE1G-E113	WD130M-15025S-E1B	1.5	2500
VD2-019SE1G-E113	WD130M-15025S-E1C	1.5	2500
VD2-016SE1G-E122	WD130M-15015S-E1B	1.5	1500
VD2-016SE1G-E122	WD130M-15015S-E1C	1.5	1500
VD2-019SE1G-E132	WD110M-18030S-E1B	1.8	3000
VD2-019SE1G-E132	WD110M-18030S-E1C	1.8	3000
VD2-021SE1G-E151	WD130M-20025S-E1B	2.0	2500
VD2-021SE1G-E151	WD130M-20025S-E1C	2.0	2500
VD2-019SE1G-E161	WD130M-23015S-E1B	2.3	1500
VD2-019SE1G-E161	WD130M-23015S-E1C	2.3	1500



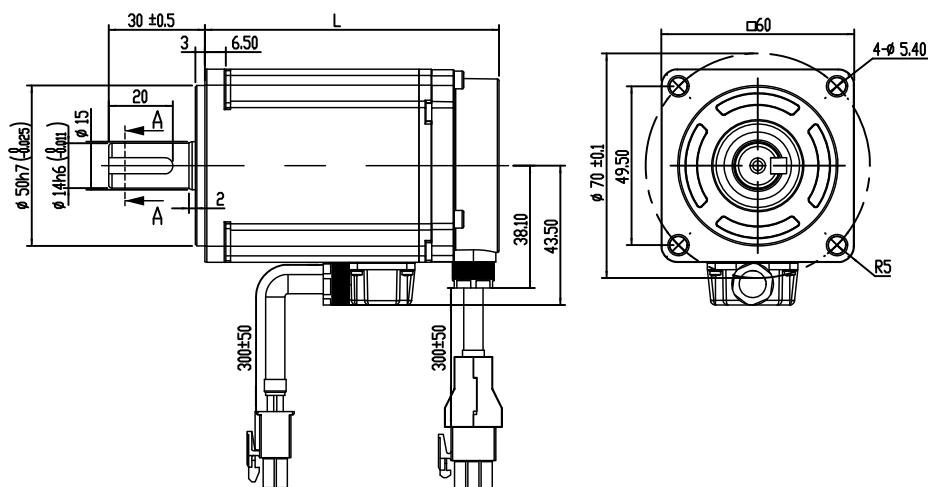
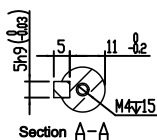
# SPECIFICATION

Item		Content	
Control Method		IGBT PWM controlled sine wave current drive	
Encoder		2500ppr incremental encoder, 17-bit absolute encoder	
Input Signal		8*DI, Select input function according to function code configuration	
Output Signal		4*DO, Select output function according to function code configuration	
Analog Signal Input		2 channel AI input, range(-10v~10v)	
Pulse Signal Input		Open collector or differential input	
Pulse Feedback Output		A, B, Z differential output	
Internal Instructions		Support 8 internal speed commands and multiple internal position commands	
Communication		Modbus channel 1	
		PC RS422 port, Parameter setting, monitoring status, waveform viewing, parameter auto-tuning, via computer	
Braking Resistor		Built-in braking resistor, supporting external braking resistor	
General Function	Automatic Parameter Tuning	It can cooperate with the host computer for automatic load inertia identification and automatic rigidity level, and the parameters self-tuning.	
	Waveform Viewing	View position, speed, torque and other curves on PC in real time	
	Waveform Storage	The waveform sampling frequency is 1KHz, and the original waveform data can be stored for up to 10s	
	Parameter Import/export	Support batch parameter import and export; support PLC automatic configuration of servo parameters (supported by some models)	
	Vibration Suppression	Suppress mechanical vibration by setting vibration suppression parameters	
	Protective Function	Overvoltage, undervoltage, overcurrent, overspeed, overload, overheating, encoder failure, excessive position deviation, torque limit, speed limit, etc.	
	Brake	Support brake output control	
	Universal Control DI	Servo enable (SON), fault and warning clear (A-CLR), forward drive prohibition (POT), reverse drive prohibition (NOT), command reverse (C-SIGN), emergency stop (E-STOP), Gain switching (GAIN-SEL), Multi-stage internal speed command selection(INSPD1、 INSPD2、 INSPD3)	
	Universal Control DO	Servo ready (RDY), fault signal (ALM), warning signal (WARN), rotation detection (TGON), zero speed signal (ZSP), torque limit (T-LIMIT), speed limit (V-LIMIT),servo on state output (SRV-ST)	
	Position Mode	Input Control	Deviation counter clear (CL), electronic gear switching 1 (GEAR-SEL), pulse input inhibit (INH), command inversion (C-SIGN), servo brake output (BRK-OFF)
Output Control		Positioning complete (P-COIN) , positioning approach (P-NEAR)	
Pulse Input		Pulse Frequency	max. 500khz
		Pulse Type	Pulse + Direction, CCW/CW pulse, Orthogonal coding
		Electronic Gear Ratio	Range: 0.01~100
		Pulse Filtering	low-pass filter or smooth filter
Pulse Output		Differential orthogonal coding A, B, Z output, PPR is settable, can be set to integer or fraction	
Torque Limit		Forward / reverse operation torque limit is settable	
Speed Limit		Forward / reverse operation speed limit is settable	
Speed Mode		Control Input	Zero clamp (ZCLAMP) ,command inversion (C-SIGN) ,Speed limit analog input
	Control Output	Velocity consistent (V-COIN) ,Speed approach (V-NEAR)	
	Command Input	Analog Input	-10V~+10V analog input
		Internal Command	set the speed via internal function code

	Soft Start	acc. and dec. time are settable
	Zero Clamp	Motor speed can be clamped to zero via the setting of zero clamp function
	Torque Limit	set the torque limit
Torque Mode	Command	Command inversion ( C-SIGN ) , Speed limit analog input
	Output	
	Control	Torque reached ( T-COIN ) , speed limit ( V-LIMIT )
	Output	
Command Input	Analog Input	-10V~+10V analog input
	Internal	Set torque through internal parameter
	Command	
	Speed Limit	Limits maximum speed in torque mode

## 60 Series Motor Specification

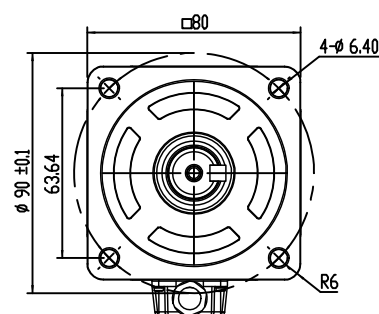
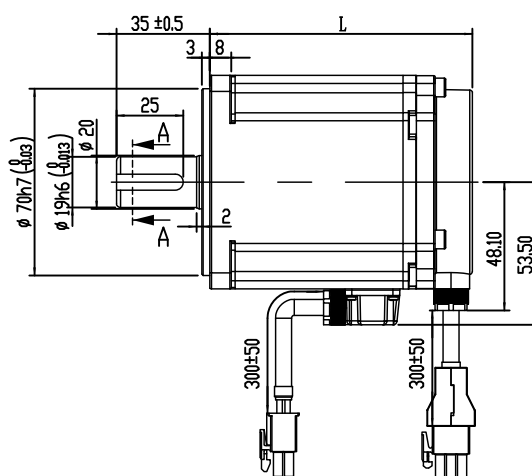
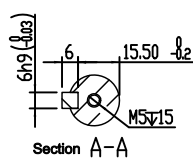
Motor model	WD60M-04030S-A1F	WD60M-04030S-A1G
Rated power (kW)		0.4
Rated current (A)		2.5
Rated torque (N·m)		1.27
Max. torque (N·m)		3.81
Rated speed (r/min)		3000
Rotor Inertia (Kg·m <sup>2</sup> )	$0.52 \times 10^{-4}$	$0.62 \times 10^{-4}$
Brake	N/A	YES
Dimension (L)	92mm	121.5mm



Rated Torque (N·m)	Model	Without Brake Dimension (L) (mm)	With Brake Dimension (L) (mm)
1.27	WD60M-04030S-A1F	92	121.5

## 80 Series Motor Specification

Motor model	WD80M-07530S-A1F	WD80M-07530S-A1G
Rated power (kW)		0.75
Rated current (A)		4.4
Rated torque (N·m)		2.39
Max. torque (N·m)		7.17
Rated speed (r/min)		3000
Rotor Inertia (Kg·m <sup>2</sup> )	1.48×10 <sup>-4</sup>	1.78×10 <sup>-4</sup>
Brake	N/A	YES
Dimension (L)	98.5mm	132.5mm



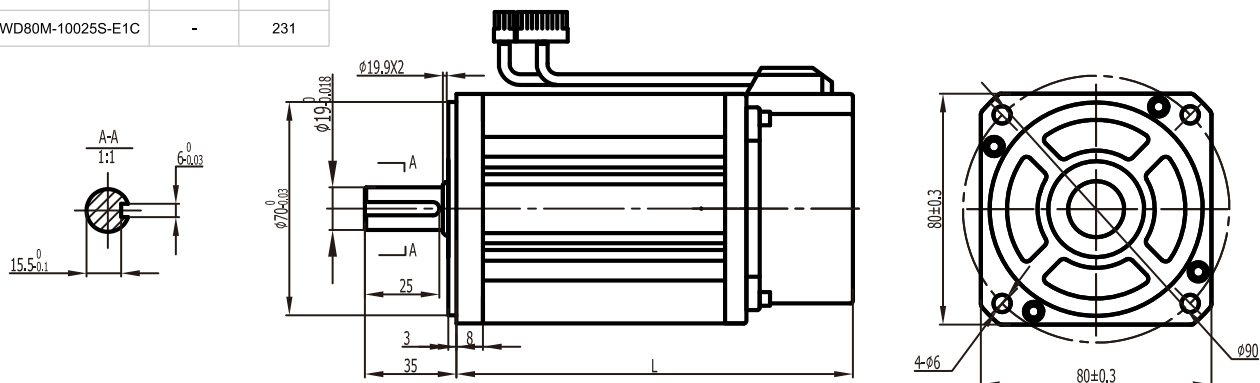
Rated Torque (N·m)	Model	Without Brake Dimension (L) (mm)	With Brake Dimension (L) (mm)
2.39	WD80M-07530S-A1F	98.5	132.5

## 80 Series Motor Specification

Motor model	WD80M-10025S-E1B	WD80M-10025S-E1C
Rated power (kW)		1.0
Rated current (A)		4.4
Rated torque (N·m)		4
Max. torque (N·m)		12
Rated speed (r/min)		2500
Rotor Inertia (Kg·m <sup>2</sup> )		$2.97 \times 10^{-4}$
Brake	N/A	YES
Dimension (L)	191mm	231mm



Rated Torque (N·m)	Model	Without Brake Dimension (L) (mm)	With Brake Dimension (L) (mm)
4	WD80M-10025S-E1B	191	-
4	WD80M-10025S-E1C	-	231

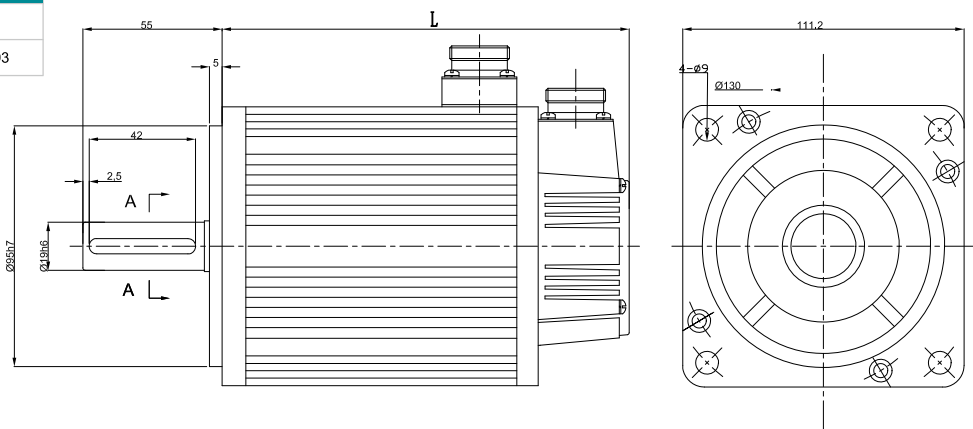
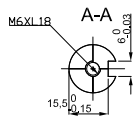


## 110 Series Motor Specification

Motor model	WD110M-18030S-E1B	WD110M-18030S-E1C
Rated power (kW)		1.8
Rated current (A)		6.0
Rated torque (N·m)		6
Max. torque (N·m)		18
Rated speed (r/min)		3000
Rotor Inertia (Kg·m <sup>2</sup> )		$0.76 \times 10^{-4}$
Brake	N/A	YES
Dimension (L)	219mm	293mm



Rated Torque (N·m)	Model	Without Brake Dimension (L) (mm)	With Brake Dimension (L) (mm)
3.5	WD110M-18030S-E1B	219	-
3.5	WD110M-18030S-E1C	-	293

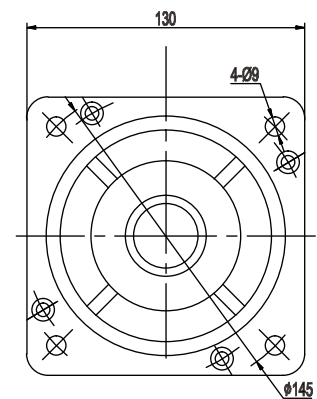
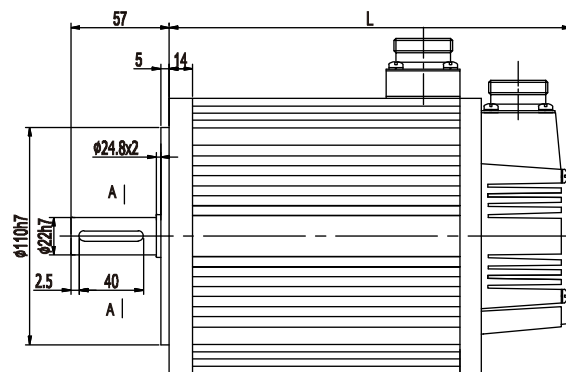
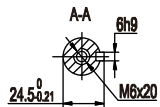


## 130 Series Motor Specification

Motor model	WD130M-10025S-E1B	WD130M-10025S-E1C	WD130M-15015S-E1B	WD130M-15015S-E1C
Rated power (kW)		1.0		1.5
Rated current (A)		4.0		6
Rated torque (N·m)		4		10
Max. torque (N·m)		12		25
Rated speed (r/min)		2500		1500
Rotor Inertia (Kg·m <sup>2</sup> )		$0.85 \times 10^{-4}$		$1.94 \times 10^{-4}$
Brake	N/A	YES	N/A	YES
Dimension (L)	166mm	223mm	213mm	294mm



Rated Torque (N·m)	Model	Without Brake Dimension (L) (mm)	With Brake Dimension (L) (mm)
4	WD130M-10025S-E1B	166	-
4	WD130M-10025S-E1C	-	223
10	WD130M-15015S-E1B	213	-
10	WD130M-15015S-E1C	-	294



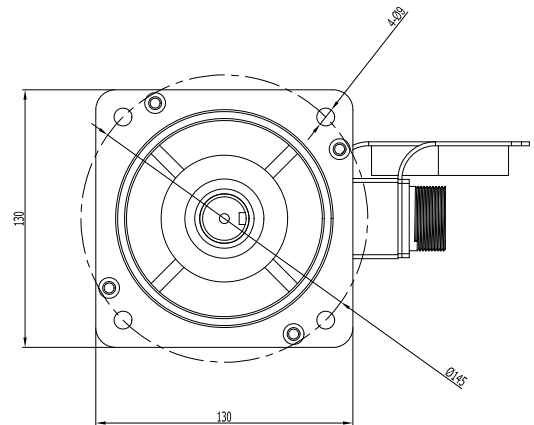
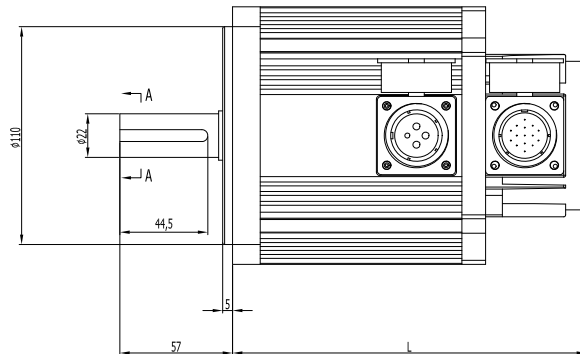
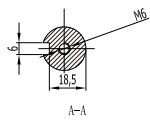


## 130 Series Motor Specification

Motor model	WD130M-15025S-E1B	WD130M-15025S-E1C
Rated power (kW)		1.5
Rated current (A)		6.0
Rated torque (N·m)		6
Max. torque (N·m)		18
Rated speed (r/min)		2500
Rotor Inertia (Kg·m <sup>2</sup> )		12.6×10 <sup>-4</sup>
Brake	N/A	YES
Dimension (L)	179mm	236mm



Rated Torque (N·m)	Model	Without Brake Dimension (L) (mm)	With Brake Dimension (L) (mm)
6	WD130M-15025S-E1B	179	-
6	WD130M-15025S-E1C	-	236



## 130 Series Motor Specification

Motor model	WD130M-20025S-E1B	WD130M-20025S-E1C	WD130M-23015S-E1B	WD130M-23015S-E1BS-E1C
Rated power (kW)	2.0		2.3	
Rated current (A)	7.5		9.5	
Rated torque (N·m)	7.7		15	
Max. torque (N·m)	22		30	
Rated speed (r/min)	2500		1500	
Rotor Inertia (Kg·m <sup>2</sup> )	15.3×10 <sup>-4</sup>		27.7×10 <sup>-4</sup>	
Brake	N/A	YES	N/A	YES
Dimension (L)	192mm	252mm	241mm	304mm



Rated Torque (N·m)	Model	Without Brake Dimension (L) (mm)
7.7	WD130M-20025S-E1B	192
15	WD130M-23015S-E1B	241

