

Graph 2

4. Question: How to export parameters to EXCEL table?

Answer: After reading out the parameters, click "Export" in Graph 2 and select the path to save.

5. Question: How to write the saved parameters to the inverter?

Answer: In Graph2, click the "Import" button, select the file to be imported, and import the parameters into the list. Then click the "Write" button to complete the writing.

6. Question: How to initialize the inverter parameters?

Answer: In Graph 2, click the "Initialization" button to automatically initialize the parameters and complete the confirmation.

7. Question: How to view the parameter description?

Answer: In Graph 2, in the parameter table that has been read out, select a parameter that needs to be viewed, and the parameter name and description are displayed in the "Explain" list on the right side of Graph 2.

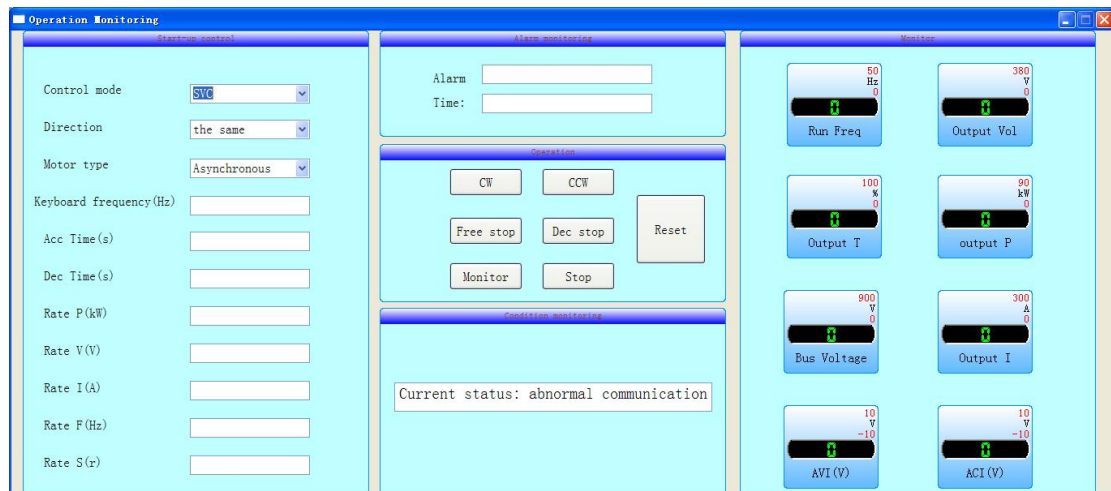
8. Question: Why do some parameter groups show readout failure?

Answer: Possibly, the communication is abnormal, you need to reconfirm the connection. In addition, some parameter groups belong to the parameters used by the manufacturer for debugging, and will also show that the reading has failed. Such as: FF group, etc.

9. Question: I want to drive the motor through the inverter, while monitoring the output voltage, current, torque and other parameters, how to operate?

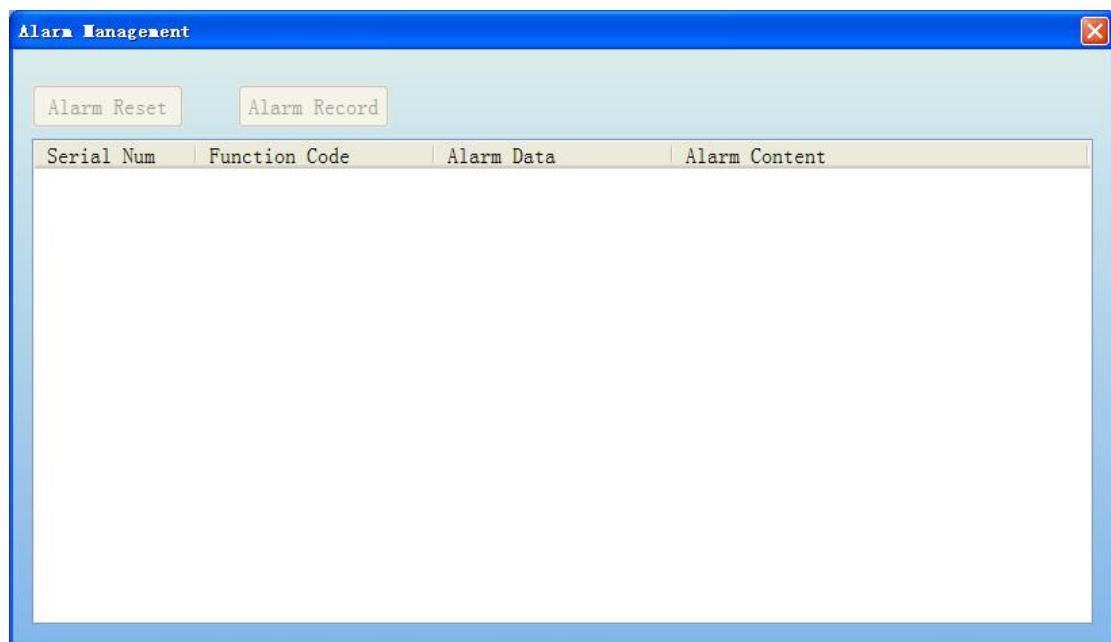
Answer: Select the "Run" button in the main interface, and set the startup control parameters in the pop-up dialog box, as shown in Graph 3. Click forward or reverse, you can run the inverter, the right side displays the eight monitored parameters, running frequency, output voltage, output current, output torque, output power, bus voltage, AI1 (AVI) , AI2 (ACI) voltage. In the middle is the status display. When an alarm occurs, it will record the last alarm that occurred and record the time of the alarm. You can reset the alarm and choose free

stop or deceleration stop.



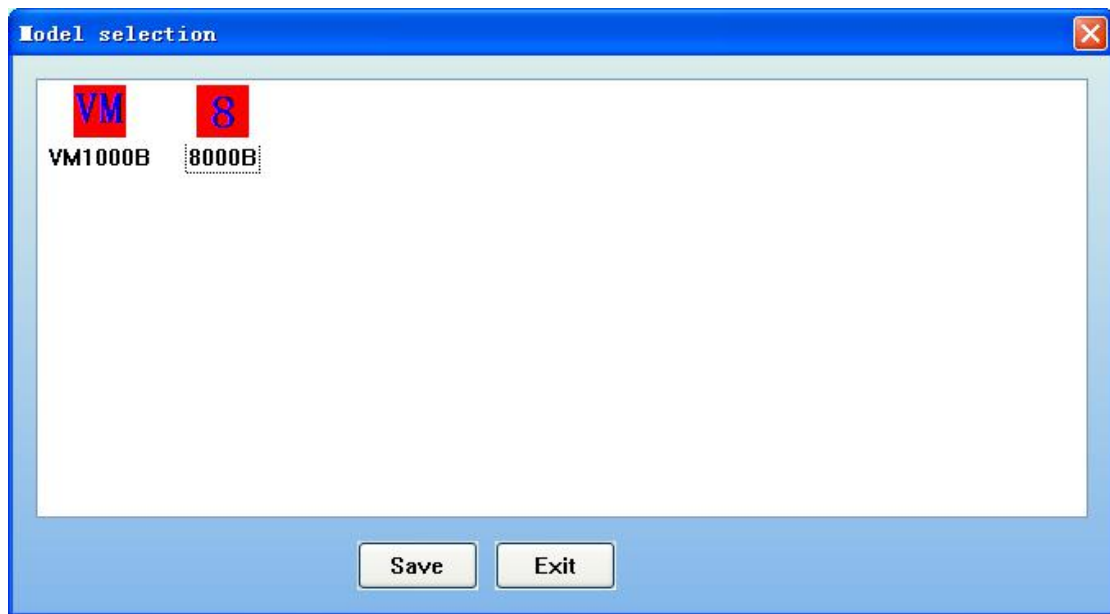
Graph 3

10. Question: How to view the past multiple alarms and their contents.
Select the "Alarm Management" shortcut menu in the main interface, and select "Alarm Record" in the pop-up dialog box. The contents of the past alarms will be displayed in the list. As shown in Graph 4



Graph 4

11. Question: Which models does the host computer software support?
Answer: Support 8000B and VM1000B, when the communication connection is normal, open the software to automatically identify the connected model (the status bar below the software shows) You can also manually select the model to be connected by clicking the "Model Selection" shortcut menu in the main menu. As shown in Graph 5.



Graph 5

12. Question: Why do some computers get failures when opening the parameter management menu?

Answer: Please make sure Microsoft Office software is already installed on the computer, otherwise there might be errors.